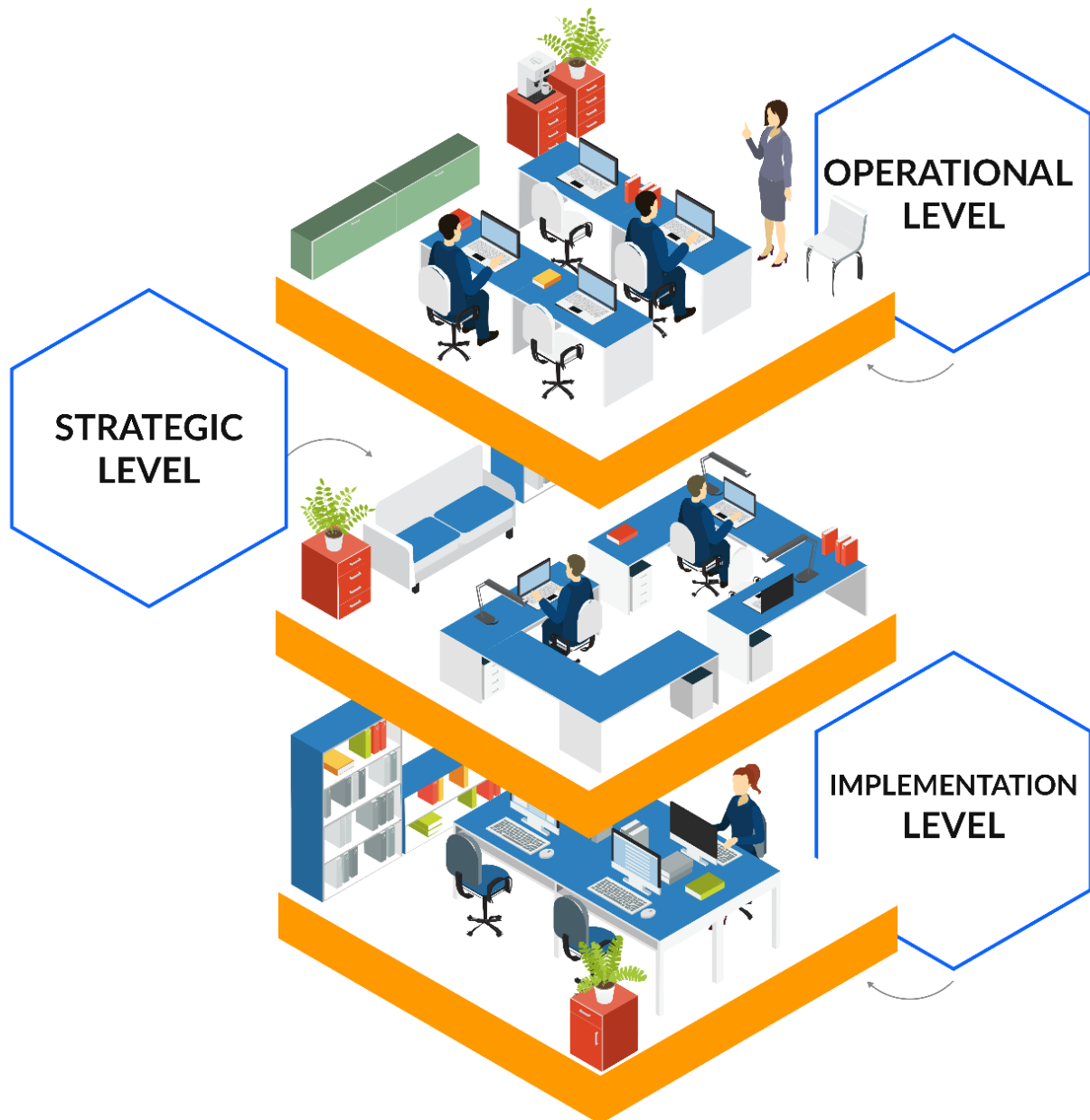
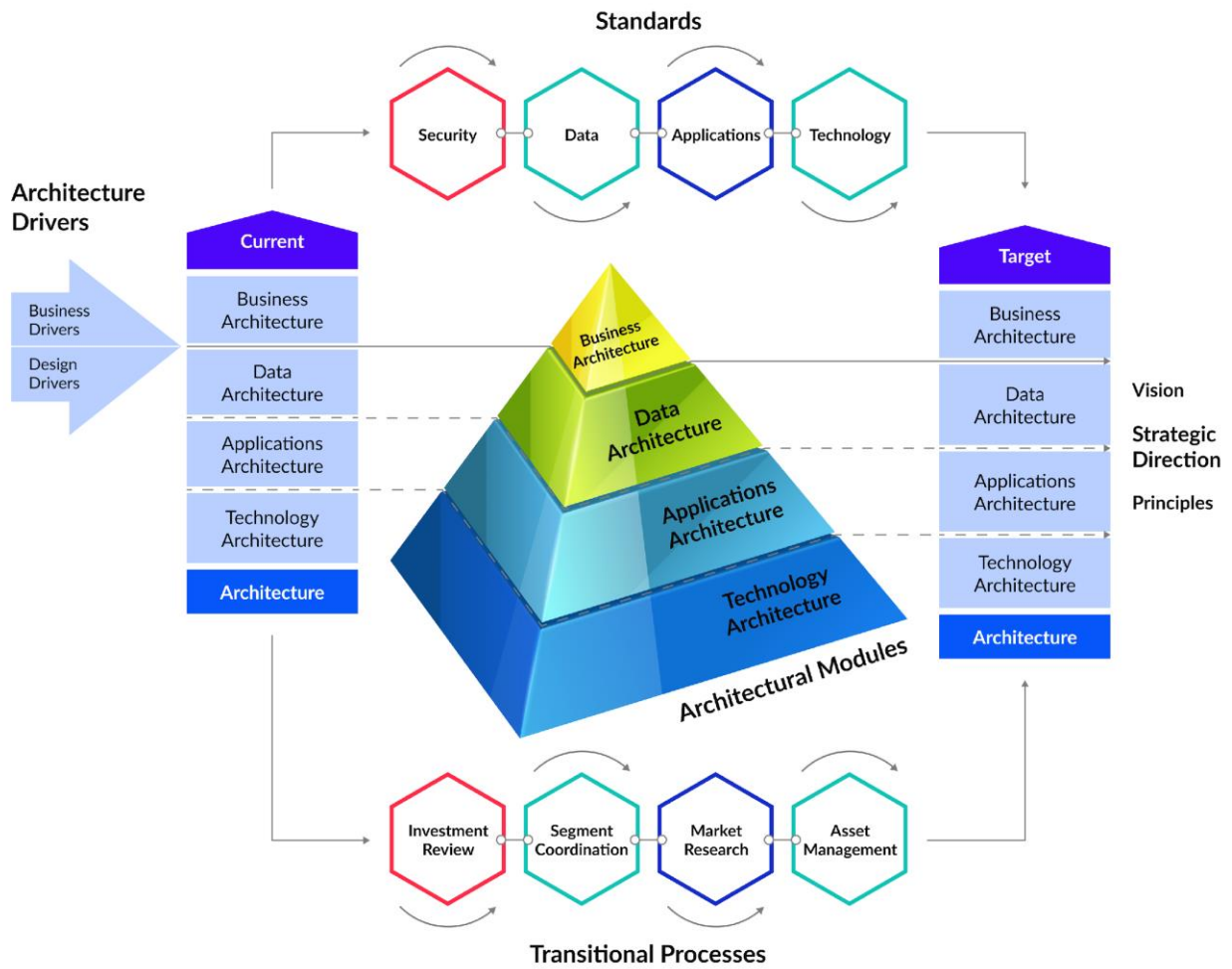
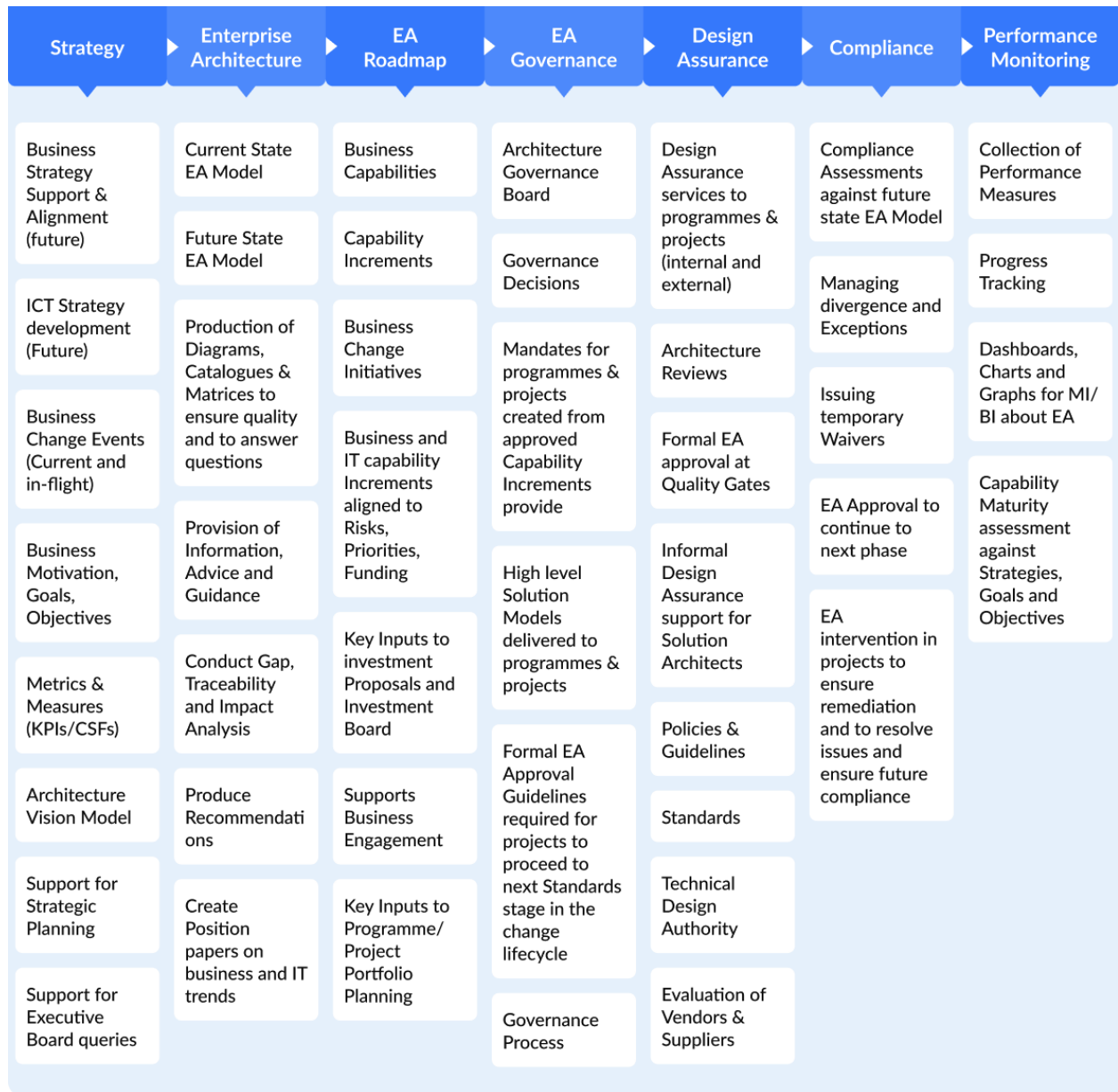


# Chapter 1: Core Foundation for Building an Enterprise IT Architecture



## Chapter 2: Defining Core Foundation and How to Get It





### **Who is an enterprise architect?**

- Software architect who oversees the complete system architecture, business processes, and IT infrastructure
- Plays a major role in reducing complexity associated with digital transformations and establishing rules and processes around technology usage

### **What is the role of an EA in digital transformation?**

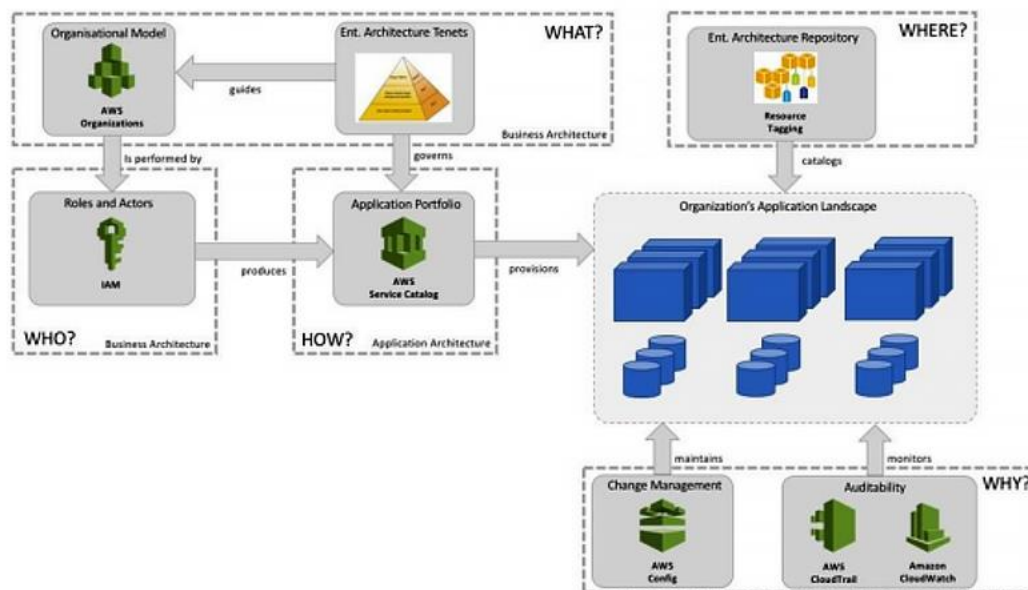
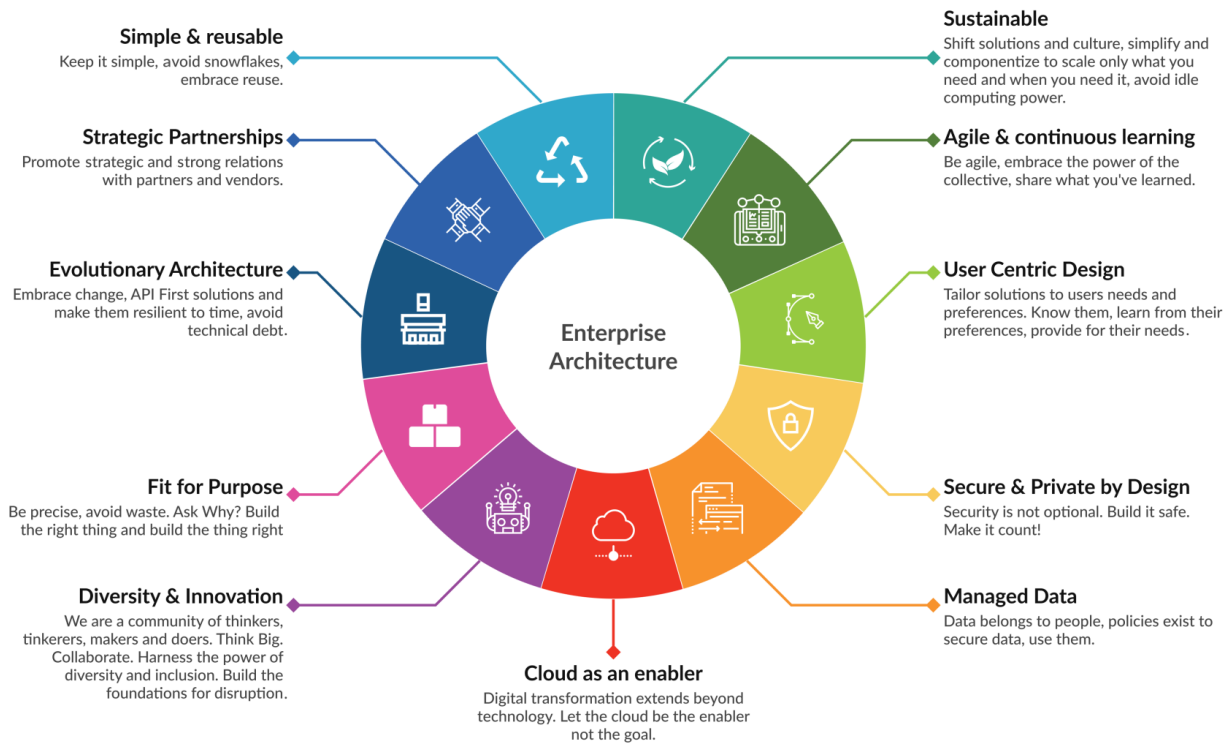
- Execute digital programs, such as cloud computing and online business models, and simplify and modernize a company's IT system
- Role is to reduce complexity to a minimal level so that the company can capitalize on digital technologies, develop product-development methodologies, and respond to customers' needs more quickly

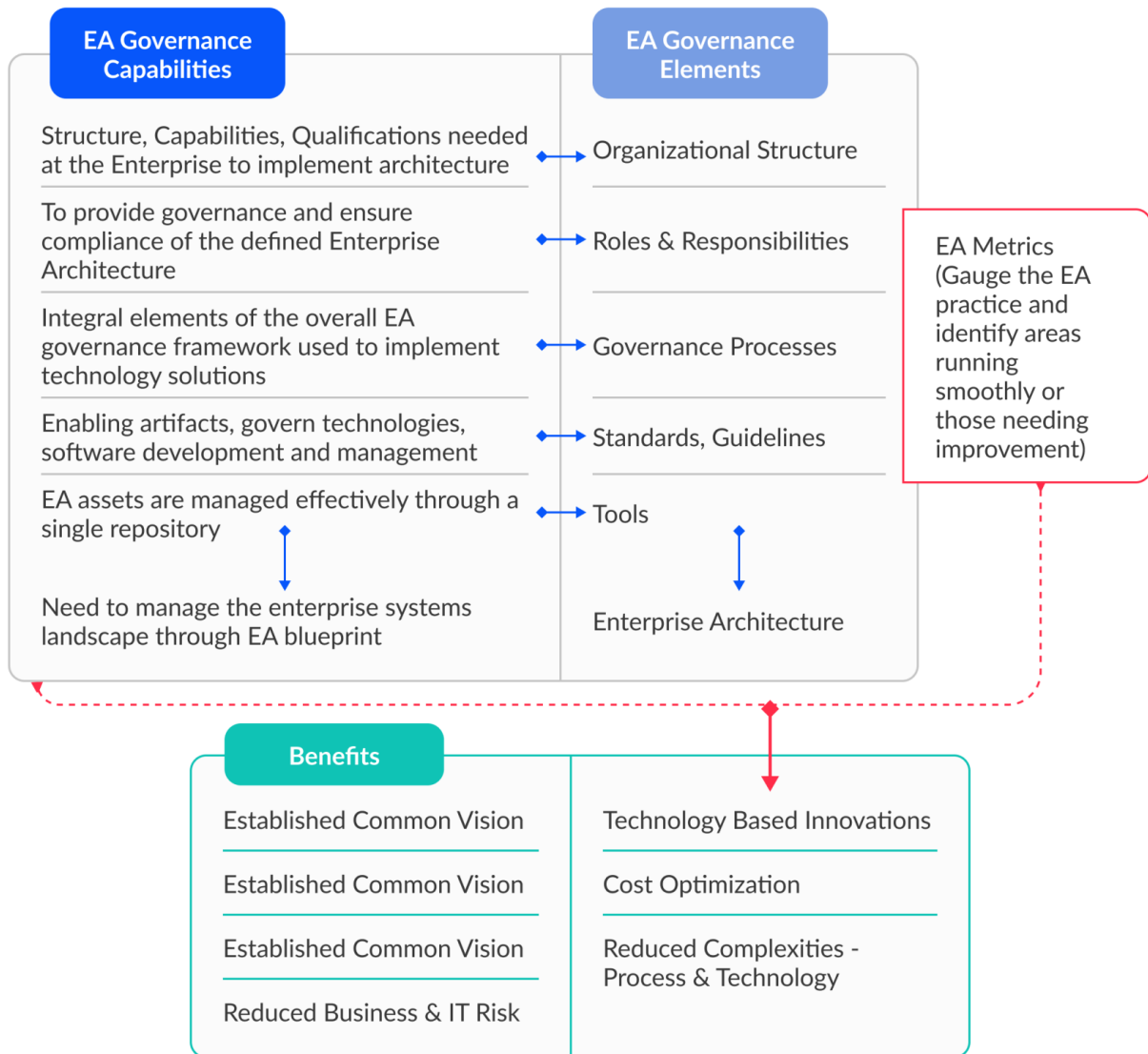
### **What steps can corporations take to empower EAs?**

- Assign more responsibility to EAs and encourage implementation of their policies and guidelines
- EA team to routinely provide business units with technology costs of any important decisions taken by them
- EA to gain a direct line of communication to decision makers

Key Business Priority	Enterprise Architecture Value
<b>Business transformation</b>	Assert business goals, redesign business models, assess impacts, design and communicate future, prioritize and plan changes, and accelerate requirements.
<b>Strategic planning</b>	Provide a business and enterprise framework for objectively prioritizing investments within and across portfolios based on strategic alignment and rationalization.
<b>Customer experience</b>	Provide root-cause analysis for experience results, inform experience decision making (e.g., priorities, available capabilities), assess impacts bidirectionally (i.e., experience and business/technology environment), and translate experience into action.
<b>Agile execution</b>	Provide big-picture direction and common language, focus execution teams on the right enterprise priorities, and accelerate requirements.
<b>Resource optimization</b>	Provide a business and enterprise lens for optimizing resources (e.g., processes, system applications) for cost/simplification reasons and assist efforts of related disciplines (e.g., business process management and operational excellence).
<b>Regulatory compliance and changes</b>	Provide a business and enterprise framework for assessing, addressing, and communicating regulatory impacts and risks; demonstrate compliance with end-to-end traceability from policy to business and IT assets.
<b>Emerging technologies</b>	Assert business goals, redesign business models, identify key applications for emerging technology, assess impacts, design and communicate future, prioritize and plan changes, and accelerate requirements.
<b>Cross-organization coordination</b>	Provide a business and enterprise framework for assessing, designing, planning, and executing mergers, acquisitions, joint ventures, joint initiatives, and startups.

# Chapter 3: Applying Enterprise Architecture to the AWS Cloud





## Chapter 4: Available Frameworks for an Enterprise Architecture

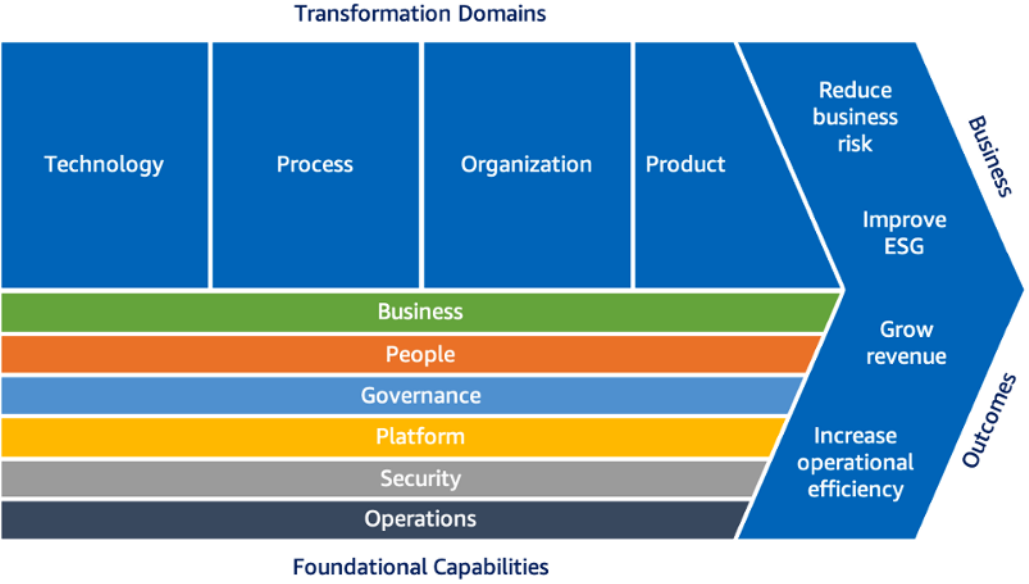
Corporate Risk Impact Assessment					
Effect	Frequency				
	Frequent	Likely	Occasional	Seldom	Unlikely
Catastrophic	E	E	H	H	M
Critical	E	H	H	M	L
Marginal	H	M	M	L	L
Negligible	M	L	L	L	L

© The Open Group

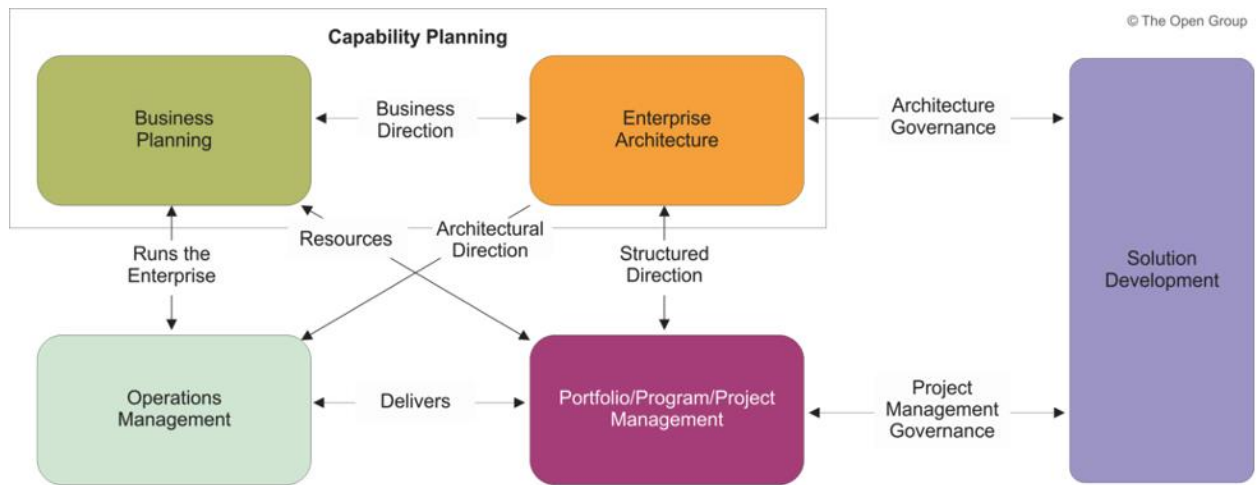


## Chapter 5: AWS Prescriptive Guidance Frameworks

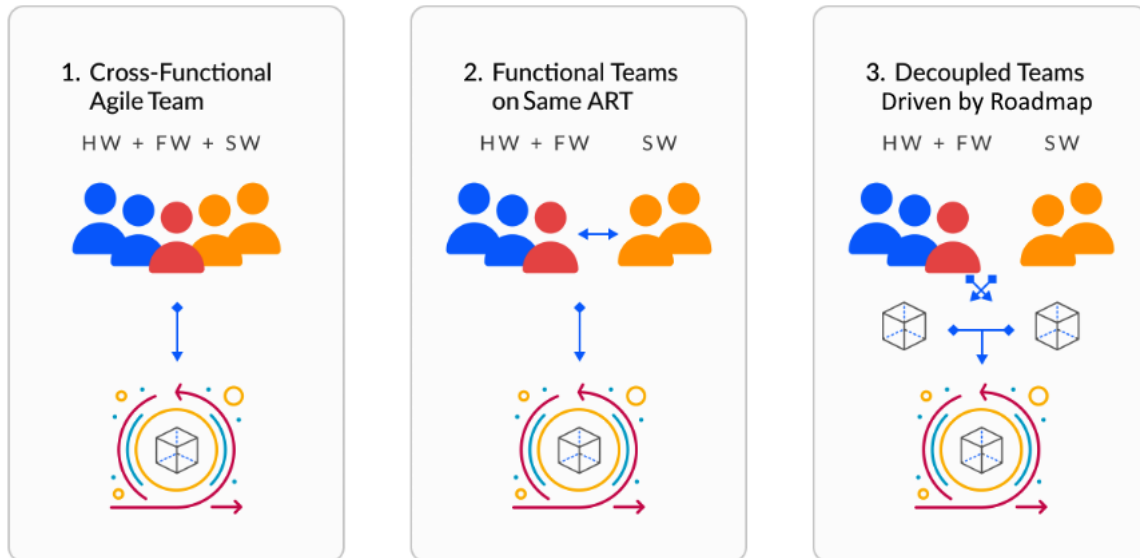




## Chapter 6: TOGAF Framework in Action with AWS

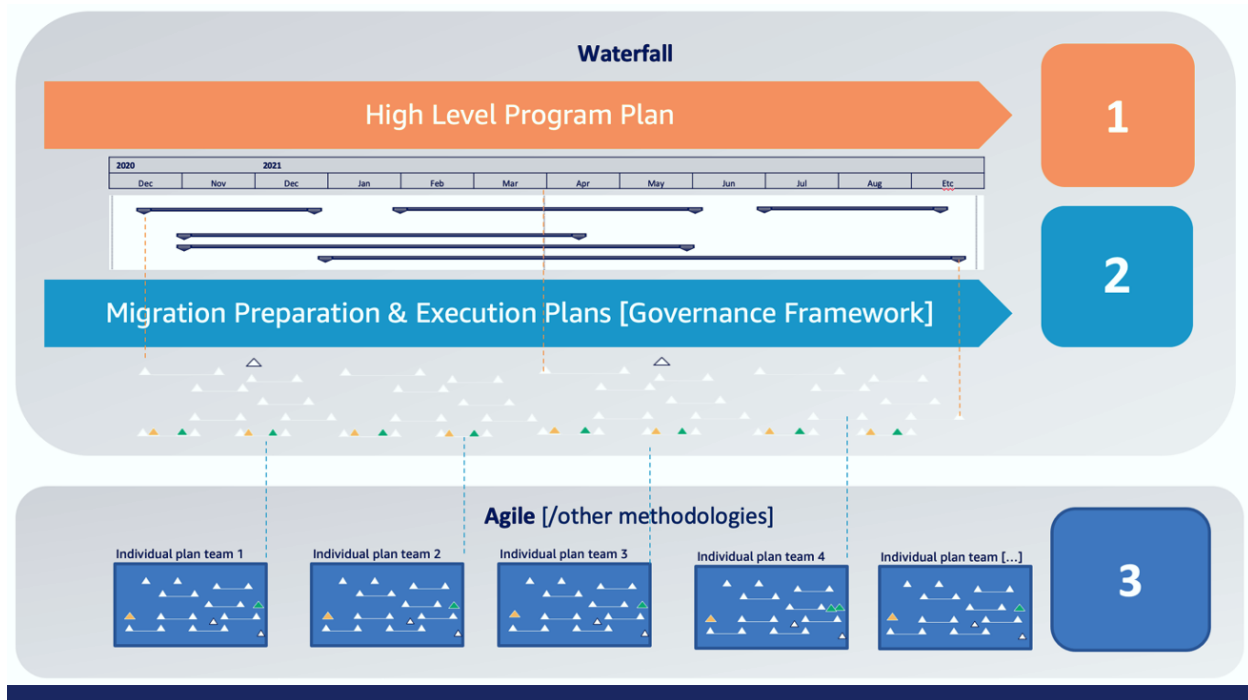


## Chapter 7: Align and Scale Agile Framework with Enterprise Architecture



## Chapter 8: SAFe Implementation for AWS Cloud Migrations

Summary	Issue Type	Description
App Migration - Wave 1	Epic	As the Migration Program Leader I want to migrate all the identified application for MRP in waves with customer
OI - License Mgmt	Epic	As the Head of Cloud services, I want to manage the licenses of the software effectively so that there are no licen
OI - Problem Mgmt	Epic	As the Head of Cloud services, I want to ensure a problem management mechanism and process in place so that r
OCM - Make it Stick	Epic	As the Cloud Executive Sponsor, I want to ensure key activities outlined in the Mitigation Strategy & Plan are execu
OCM - Enable Capacity	Epic	As the Cloud Executive Sponsor, I want to drive a new organizational culture that produces a return on reward, in c
OCM - Engage the Organization	Epic	As the Cloud Executive Sponsor, I want to ensure alignment and commitment across leadership and key stakehold
OCM - Envision the Future	Epic	As the Cloud Executive Sponsor, I want to ensure Change Strategy, Communication, Engagement Strategy, Training
OCM - Align Leaders	Epic	As the Cloud Program Sponsor, I want to secure alignment of key global and regional/local business stakeholders t
OCM - Mobilize Team	Epic	As the Executive Cloud Program Sponsor, I want a thoughtful, structured, documented approach to delivering clou
OI - Patch Management	Epic	As a head of security, I need to provide a mechanism as well as ensure that all the application services and the inf
Security - Incident Management	Epic	As an incident response manager, I want to develop and implement an incident response plan/methodology so thi
Security - Data Management	Epic	As a data protection manager, I want to establish and implement an encryption at rest and in transit methodology
Security - Infrastructure Management	Epic	As a infrastructure security manager, I want to implement security and compliance infrastructure so I can have a r
Security - Logging and Monitoring Management	Epic	As a logging and monitoring manager, I want to implement logging and monitoring framework so that I can moni
Security - Access Management	Epic	As the identity and access manager, I want to securely control access to my AWS services and resources for my us
Migration-at-scale Planning	Epic	As the Migration Program Leader, I want to ensure that all prerequisites have been baselined so that the applicati
Landing Zone Setup	Epic	As a CIO, I want to build a scalable and resilient virtual data center in the cloud so that we can support business
Program Management Setup & Execution	Epic	As the Executive Sponsor (CIO), I want to lay down the foundation for mobilizing my teams so that they are prepa
Business case and TCO	Epic	As an Executive Sponsor, I want to know the migration and run costs in AWS, so that I can generate a business cas
Baseline Discovery	Epic	As an IT Director, I want to discover all my infrastructure assets so that I have a complete picture of my current st
MRA	Epic	As a CIO, I want to assess my current organizational capabilities so that I can decide if my team is ready for Clou



## Chapter 9: Setting Up an Enterprise Architecture Practice

*No Images...*

## Chapter 10: Conclusion

*No Images...*