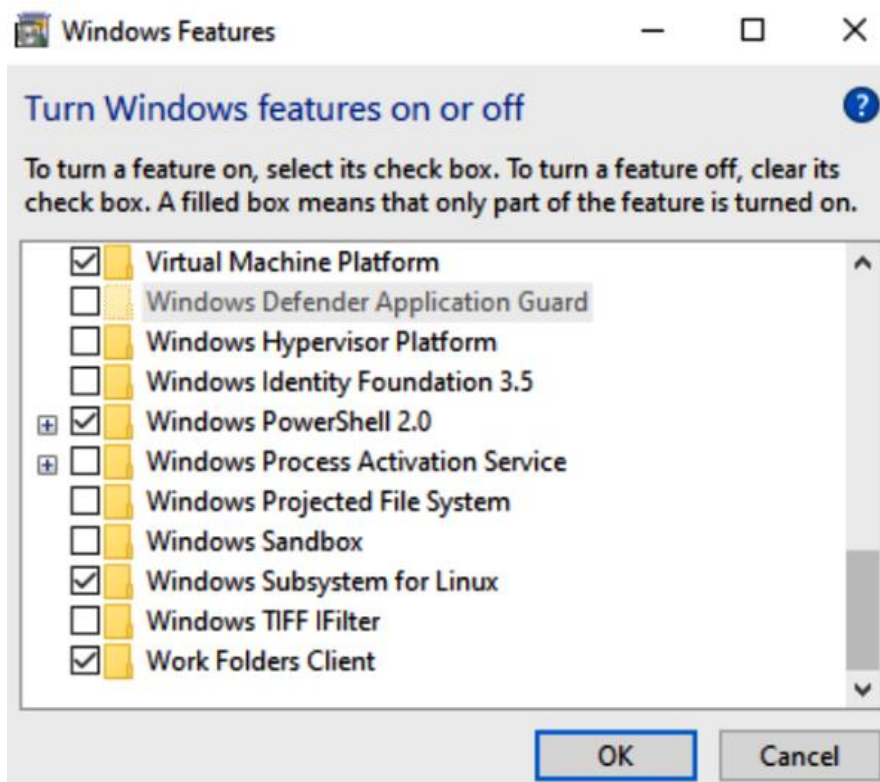
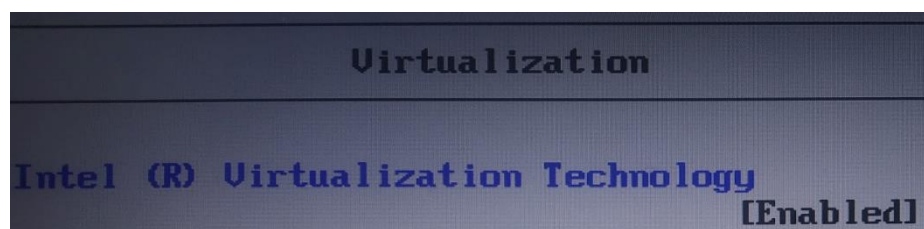
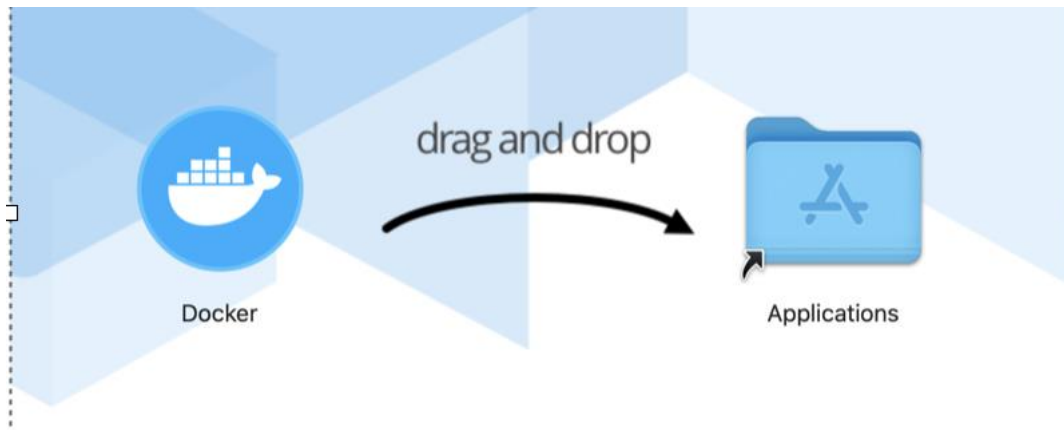


Chapter 1: Introduction to Docker Compose



Turn Windows features on or off ?

To turn a feature on, select its check box. To turn a feature off, clear its check box. A filled box means that only part of the feature is turned on.

<input type="checkbox"/>	<input type="checkbox"/>	.NET Framework 3.5 (includes .NET 2.0 and 3.0)	^
<input type="checkbox"/>	<input checked="" type="checkbox"/>	.NET Framework 4.8 Advanced Services	
<input type="checkbox"/>	<input type="checkbox"/>	Active Directory Lightweight Directory Services	
<input checked="" type="checkbox"/>	<input type="checkbox"/>	Containers	
<input type="checkbox"/>	<input type="checkbox"/>	Data Center Bridging	
<input type="checkbox"/>	<input type="checkbox"/>	Device Lockdown	
<input type="checkbox"/>	<input type="checkbox"/>	Guarded Host	
<input checked="" type="checkbox"/>	<input type="checkbox"/>	Hyper-V	
<input checked="" type="checkbox"/>	<input type="checkbox"/>	Internet Explorer 11	
<input type="checkbox"/>	<input type="checkbox"/>	Internet Information Services	
<input type="checkbox"/>	<input type="checkbox"/>	Internet Information Services Hostable Web Core	v

OK

Cancel

Chapter 2: Running the First Application Using Compose

No Images

Chapter 3: Network and Volumes Fundamentals

No Images

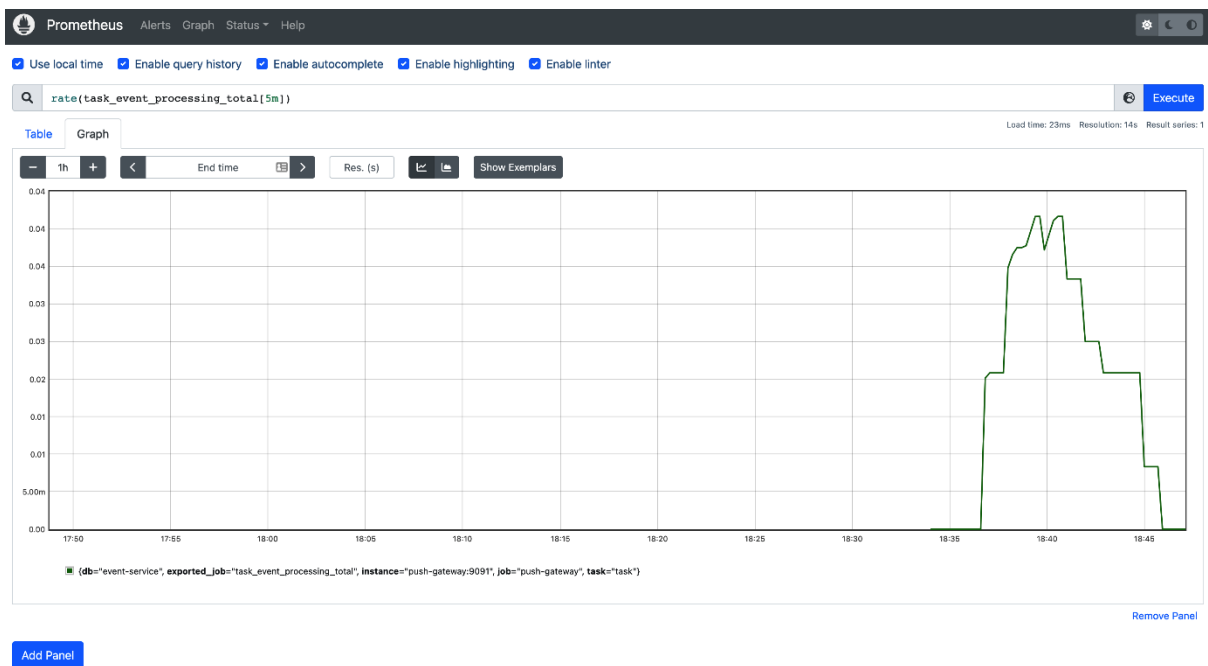
Chapter 4: Executing Docker Compose Commands

No Images

Chapter 5: Connecting Microservices

No Images

Chapter 6: Monitoring Services with Prometheus

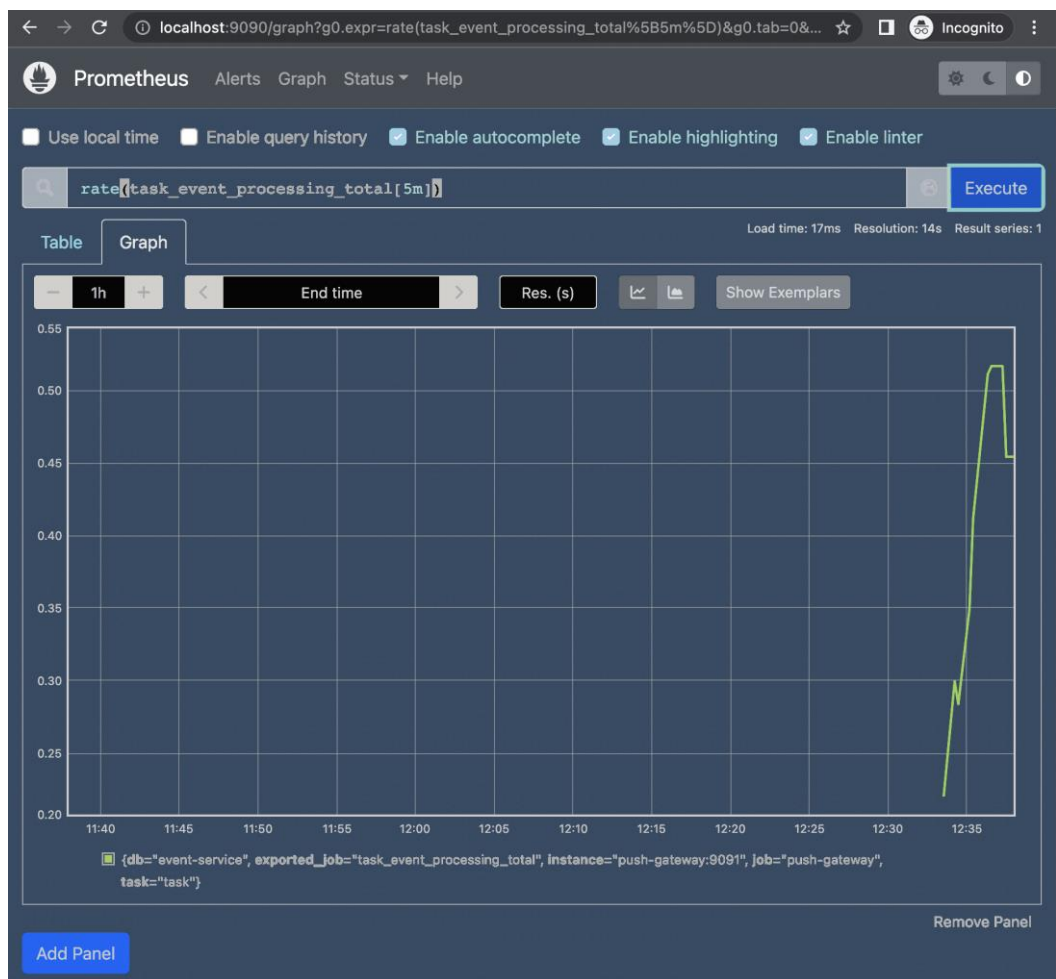


```
localhost:9090/config

Prometheus Alerts Graph Status Help

Configuration Copy to clipboard

global:
  scrape_interval: 1m
  scrape_timeout: 10s
  evaluation_interval: 1m
rule_files:
  - /etc/prometheus/alerts.yaml
scrape_configs:
  - job_name: task-manager
    honor_timestamps: true
    scrape_interval: 1m
    scrape_timeout: 10s
    metrics_path: /metrics
    scheme: http
    follow_redirects: true
    static_configs:
      - targets:
        - task-manager:8080
  - job_name: location-service
    honor_timestamps: true
    scrape_interval: 1m
    scrape_timeout: 10s
    metrics_path: /metrics
    scheme: http
    follow_redirects: true
    static_configs:
      - targets:
        - location-service:8080
  - job_name: push-gateway
    honor_timestamps: true
    scrape_interval: 1m
    scrape_timeout: 10s
    metrics_path: /metrics
    scheme: http
    follow_redirects: true
    static_configs:
      - targets:
        - push-gateway:9091
```



localhost:9090/alerts Prometheus Alerts Graph Status Help

☒ Inactive (1) ☒ Pending (0) ☒ Firing (0) Filter by name or labels Show annotations

/etc/prometheus/alerts.yaml > task-manager Inactive

> too-many-tasks (0 active)

localhost:9090/alerts

Prometheus Alerts Graph Status Help

Inactive (0) Pending (1) Firing (0) Filter by name or labels Show annotations

/etc/prometheus/alerts.yaml > task-manager pending (1)

> too-many-tasks (1 active)

localhost:9090/alerts

Prometheus Alerts Graph Status Help

Inactive (0) Pending (0) Firing (1) Filter by name or labels Show annotations

/etc/prometheus/alerts.yaml > task-manager firing (1)

▼ too-many-tasks (1 active)

name: too-many-tasks
expr: rate(task_event_processing_total[5m]) > 0.2
for: 1m
annotations:
summary: Too many tasks

Labels	State	Active Since	Value
alertname=too-many-tasks db=event-service exported_job=task_event_processing_total instance=push-gateway:9091 job=push-gateway task=task	FIRING	2022-06-03T12:34:14.169293498Z	0.3561324444444445

Chapter 7: Combining Compose Files

Information

Mode

capture

Destination

.

Version

v1.3.6

Mode selector

Capture

Simulate

Spy

Diff

Modify

Synthesize

Request counters

Captured

0

Simulated

0

Spied

0

Diffed

0

Modified

0

Synthesized

0

Middleware

Remote

Binary

Script

Chapter 8: Simulating Production Locally

No Images

Chapter 9: Creating Advanced CI/CD Tasks

Pipelines settings

Pipelines will build your repository on every push once you enable Pipelines and commit a valid `bitbucket-pipelines.yml` file in your repository.

Enable Pipelines



[Configure bitbucket-pipelines.yml](#)

Chapter 10: Deploying Docker Compose Using Remote Hosts

Add user

1

2

3

4

5

Set user details

You can add multiple users at once with the same access type and permissions. [Learn more](#)

User name*

guide-to-docker-compose

+

 Add another user

Select AWS access type

Select how these users will primarily access AWS. If you choose only programmatic access, it does NOT prevent users from accessing the console using an assumed role. Access keys and autogenerated passwords are provided in the last step. [Learn more](#)

Select AWS credential type*

☒ Access key - Programmatic access

Enables an **access key ID** and **secret access key** for the AWS API, CLI, SDK, and other development tools.

☐ Password - AWS Management Console access

Enables a **password** that allows users to sign-in to the AWS Management Console.

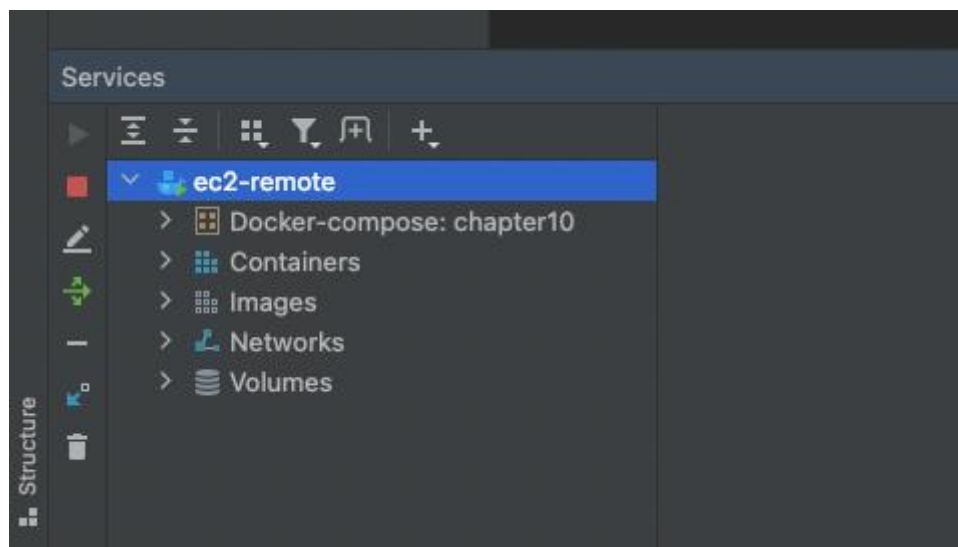
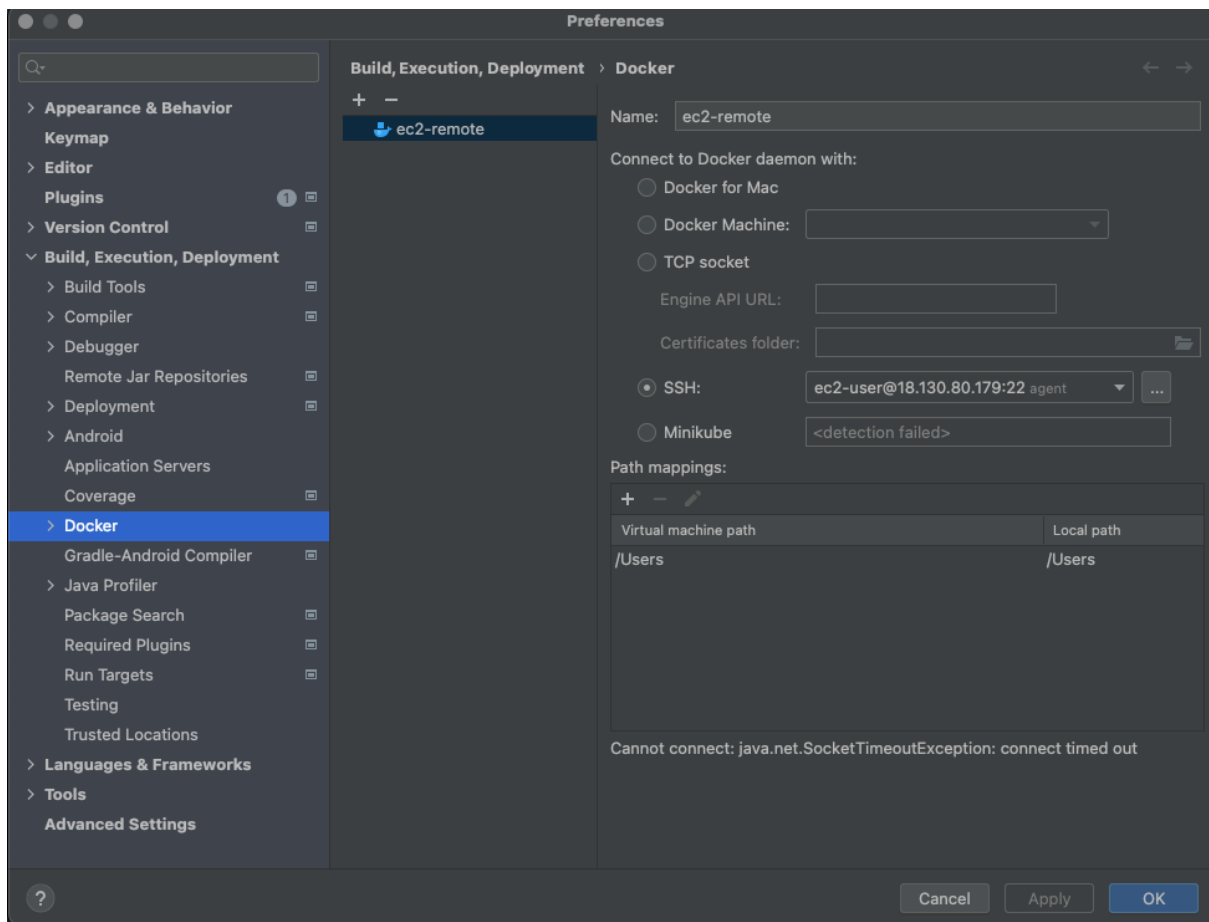
VPC > Your VPCs > vpc-8efaa***

vpc-8efaa***

Actions ▼

Details Info

VPC ID	State	DNS hostnames	DNS resolution
<div><div></div>vpc-8efaa***</div>	<div><div>✔</div> Available</div>	Enabled	Enabled
Tenancy	DHCP options set	Main route table	Main network ACL
Default	***	***	***



services

ec2-remote

Docker-compose: chapter10

redis

chapter10-redis-1

chapter10_default

Containers

Images

Networks

Volumes

Dashboard

Log

chapter10-redis-1 81a93c63 redis:latest

1:M 22 Jun 2022 23:41:33.780 * monotonic clock: POSIX clock_gettime
1:M 22 Jun 2022 23:41:33.781 * Running mode=standalone, port=6379.
1:M 22 Jun 2022 23:41:33.782 # Server initialized
1:M 22 Jun 2022 23:41:33.782 # WARNING Your system is configured to use the 'xen' clocksource which might lead to
1:M 22 Jun 2022 23:41:33.782 * Loading RDB produced by version 7.0.2
1:M 22 Jun 2022 23:41:33.783 * RDB age 8 seconds
1:M 22 Jun 2022 23:41:33.783 * RDB memory usage when created 0.82 Mb
1:M 22 Jun 2022 23:41:33.783 * Done loading RDB, keys loaded: 0, keys expired: 0.
1:M 22 Jun 2022 23:41:33.783 * DB loaded from disk: 0.001 seconds
1:M 22 Jun 2022 23:41:33.783 * Ready to accept connections

Chapter 11: Deploying Docker Compose to AWS

CloudFormation > Stacks > aws

Stacks (1)

Active ☒ View nested < 1 >

aws

2022-07-11 08:03:08 UTC+0100

[CREATE_IN_PROGRESS](#)

aws

Delete

Update

Stack actions

Create stack

Stack info

Events

Resources

Outputs

Parameters

Template

Change sets

Events (56)

Timestamp	Logical ID	Status	Status reason
2022-07-11 08:03:38 UTC+0100	RedisTaskDefinition	CREATE_COMPLETE	-
2022-07-11 08:03:38 UTC+0100	EventserviceTaskDefinition	CREATE_COMPLETE	-
2022-07-11 08:03:38 UTC+0100	LocationserviceTaskDefinition	CREATE_COMPLETE	-
2022-07-11 08:03:38 UTC+0100	TaskmanagerTaskDefinition	CREATE_COMPLETE	-
2022-07-11 08:03:38 UTC+0100	EventserviceTaskDefinition	CREATE_IN_PROGRESS	Resource creation Initiated
2022-07-11 08:03:38 UTC+0100	RedisTaskDefinition	CREATE_IN_PROGRESS	Resource creation Initiated
2022-07-11 08:03:37 UTC+0100	LocationserviceTaskDefinition	CREATE_IN_PROGRESS	Resource creation Initiated
2022-07-11 08:03:37 UTC+0100	TaskmanagerTaskDefinition	CREATE_IN_PROGRESS	Resource creation Initiated
2022-07-11 08:03:35 UTC+0100	EventserviceTaskDefinition	CREATE_IN_PROGRESS	-

Chapter 12: Deploying Docker Compose to Azure

No Images

Chapter 13: Migrating to Kubernetes Configuration Using Compose

