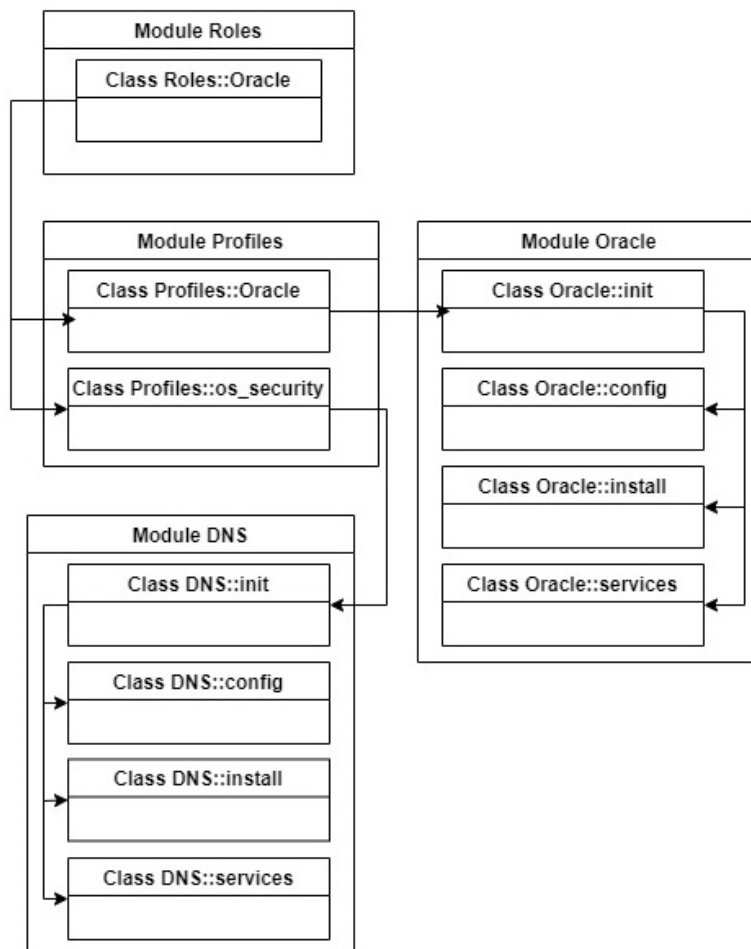
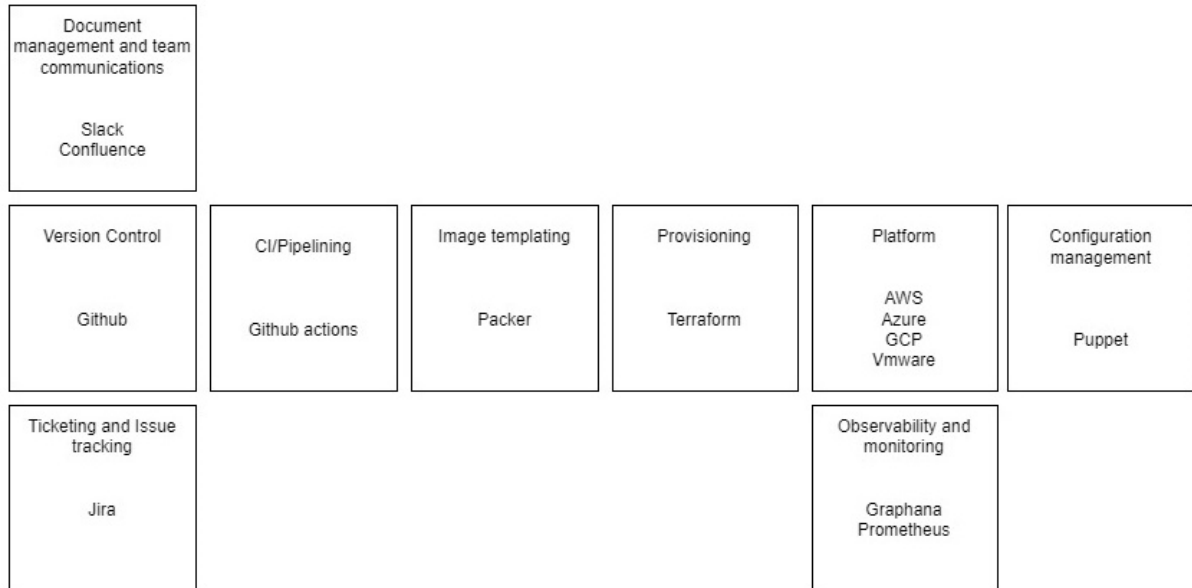
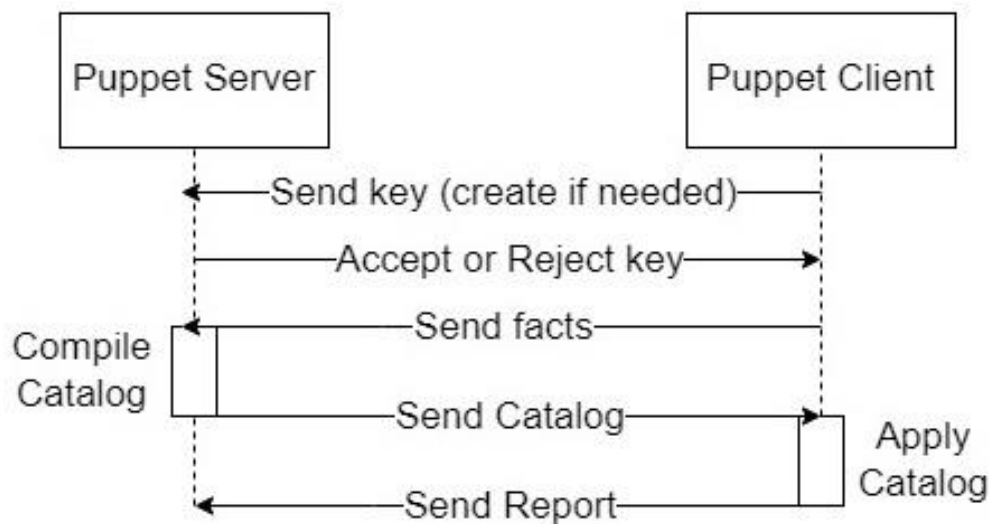


Chapter 1: Puppet Concepts and Practices



Example Org Portal

Infrastructure	Service tasks	Access	Requests
Rhel 8 standard build virtual machine		Windows 2020 standard build virtual machine	
Websphere Standard build virtual machine		IIS Standard build virtual machine	
Oracle Standard build virtual machine		MYSQL Standard build virtual machine	



Message

Applied catalog in 45.89 seconds

Source: Puppet

command changed to 'GRANT CONNECT ON DATABASE "pe-puppetdb" TO "telegraf"'

Source: /Stage[main]/Puppet_operational_dashboards::Profile::Postgres_access/Pe_postgresql::Server::Database_grant[operational_dashboards_telegraf]/Pe_postgresql::Server::Grant[database:operational_dashboards_telegraf]/Pe_postgresql_psql[GRANT CONNECT ON DATABASE "pe-puppetdb" TO "telegraf"]/command

File: /opt/puppetlabs/puppet/modules/pe_postgresql/manifests/server/grant.pp **Line:** 70

Triggered 'refresh' from 1 event

Source: /Stage[main]/Puppet_enterprise::Master::Puppetserver/Puppet_enterprise::Trapperkeeper::Pe_service[puppetserver]/Service[pe-puppetserver]

File: /opt/puppetlabs/puppet/modules/puppet_enterprise/manifests/trapperkeeper/pe_service.pp


Line: 10

command changed to 'GRANT pg_monitor TO telegraf'

Source: /Stage[main]/Puppet_operational_dashboards::Profile::Postgres_access/Pe_postgresql_psql[telegraf_pg_monitor_grant]/command

File: /etc/puppetlabs/code/environments/production/modules/puppet_operational_dashboards/manifests/profile/postgres_access.pp

Line: 28



New in 2021.5

ENFORCEMENT

- Status
- Reports
- Jobs
- Events

ORCHESTRATION

- Tasks
- Plans

INVENTORY

- Nodes
- Node groups
- Packages

PATCH MANAGEMENT

- Patches

Status





Status

View the latest run status for your nodes

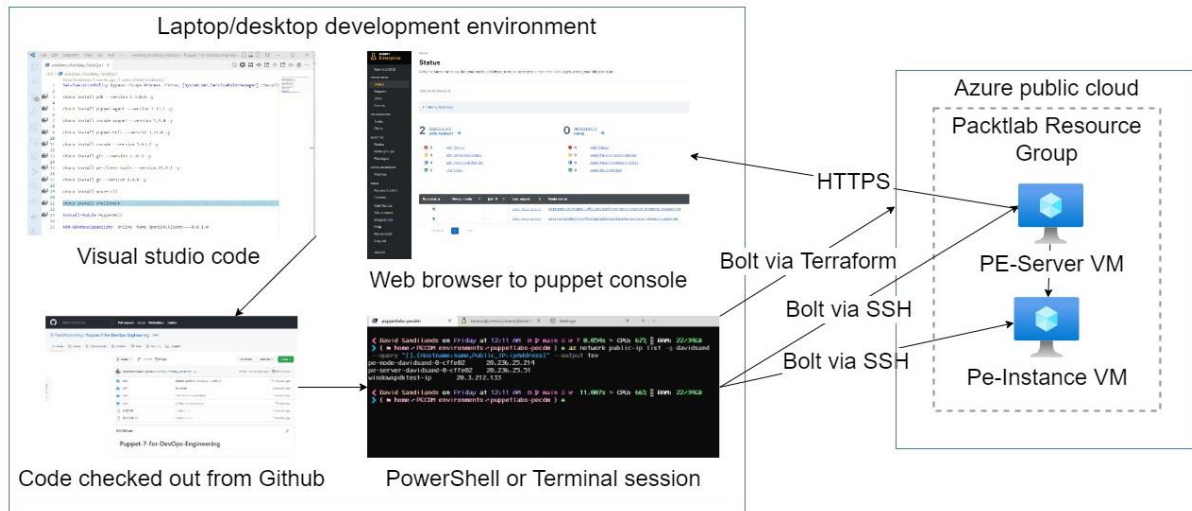
Total active nodes: 6

► Filter by fact value

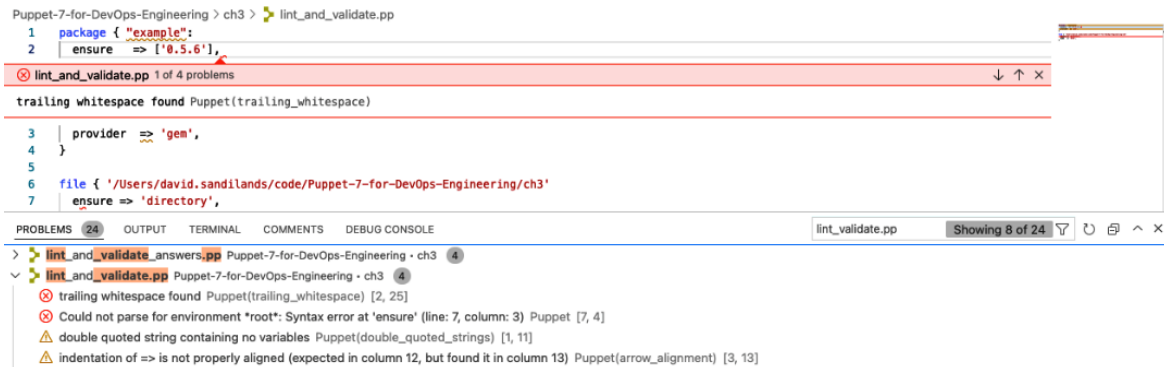
6 [Nodes run in enforcement](#) 

	0	with failures
	0	with corrective changes
	5	with intentional changes
	1	unchanged

Chapter 2: Major Changes, Useful Tools, and References



Chapter 3: Puppet Classes, Resources Types, and Providers



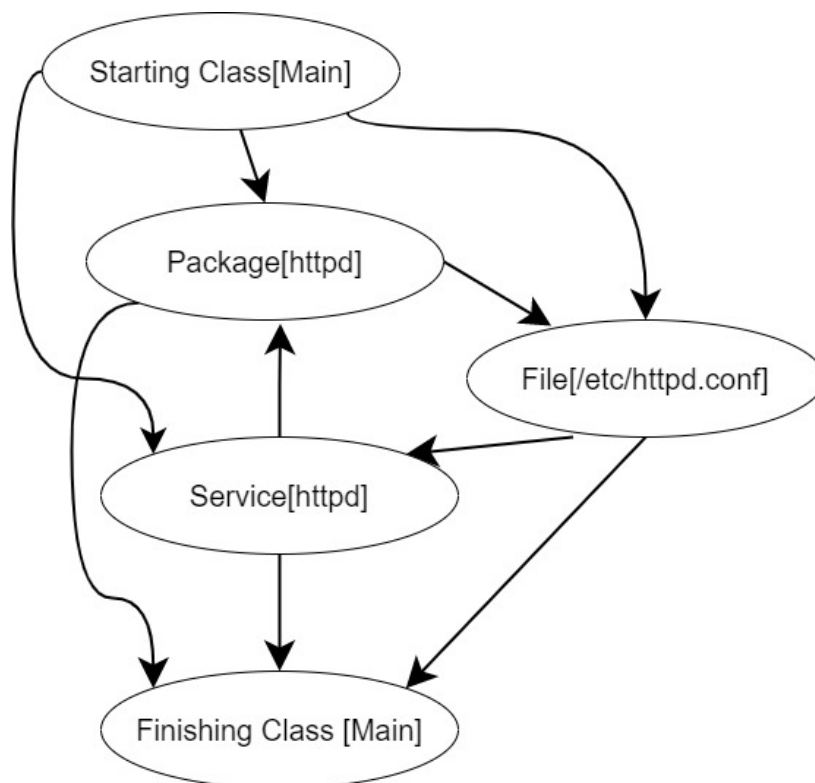
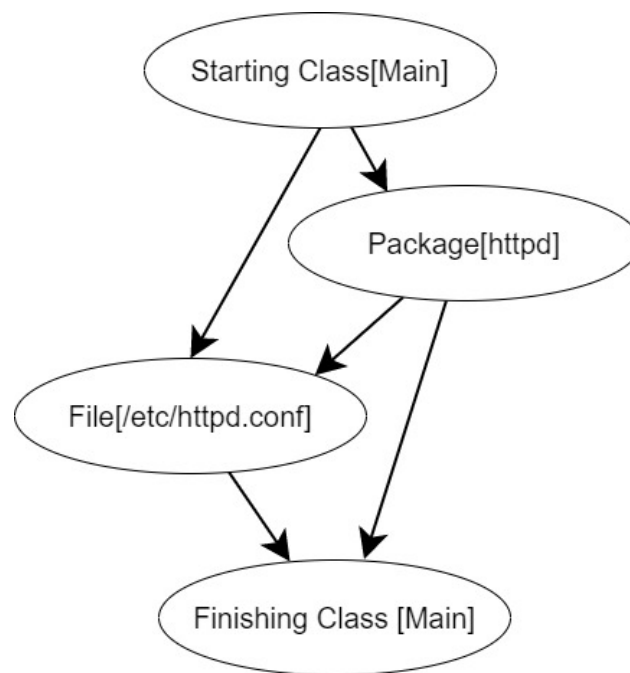
Chapter 4: Variables and Data Types

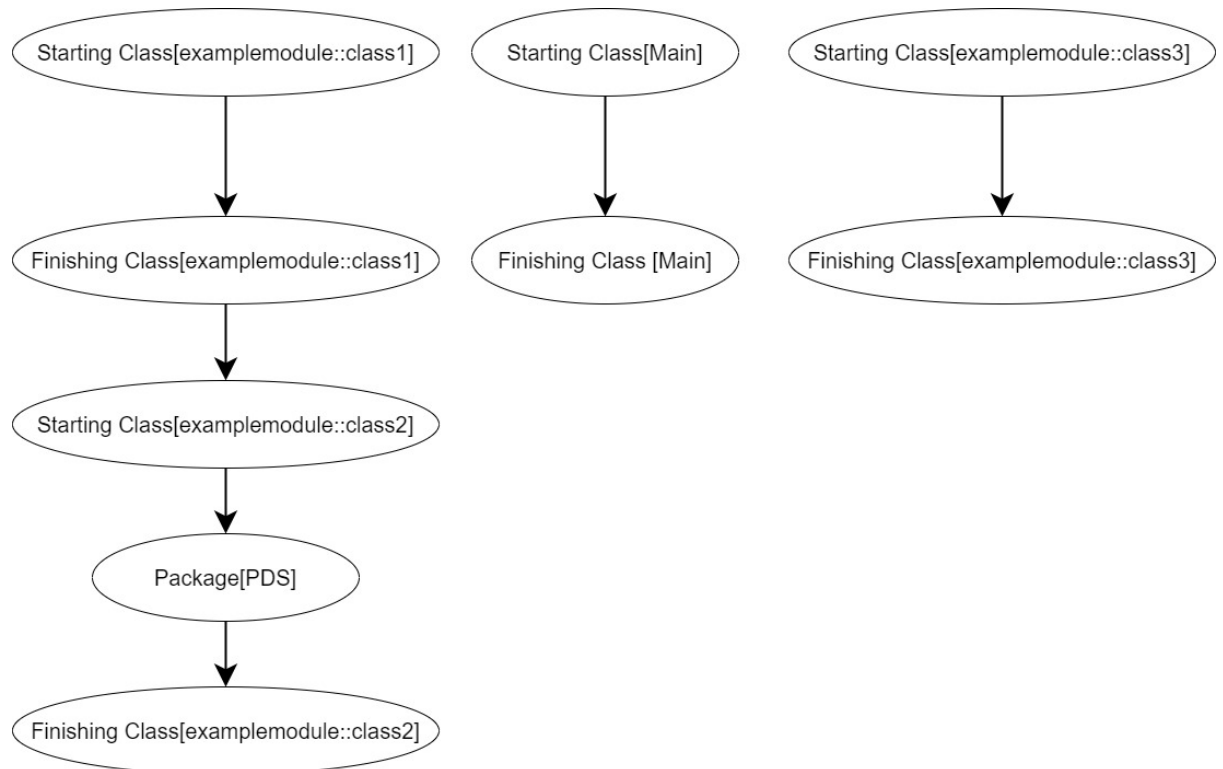
No images...

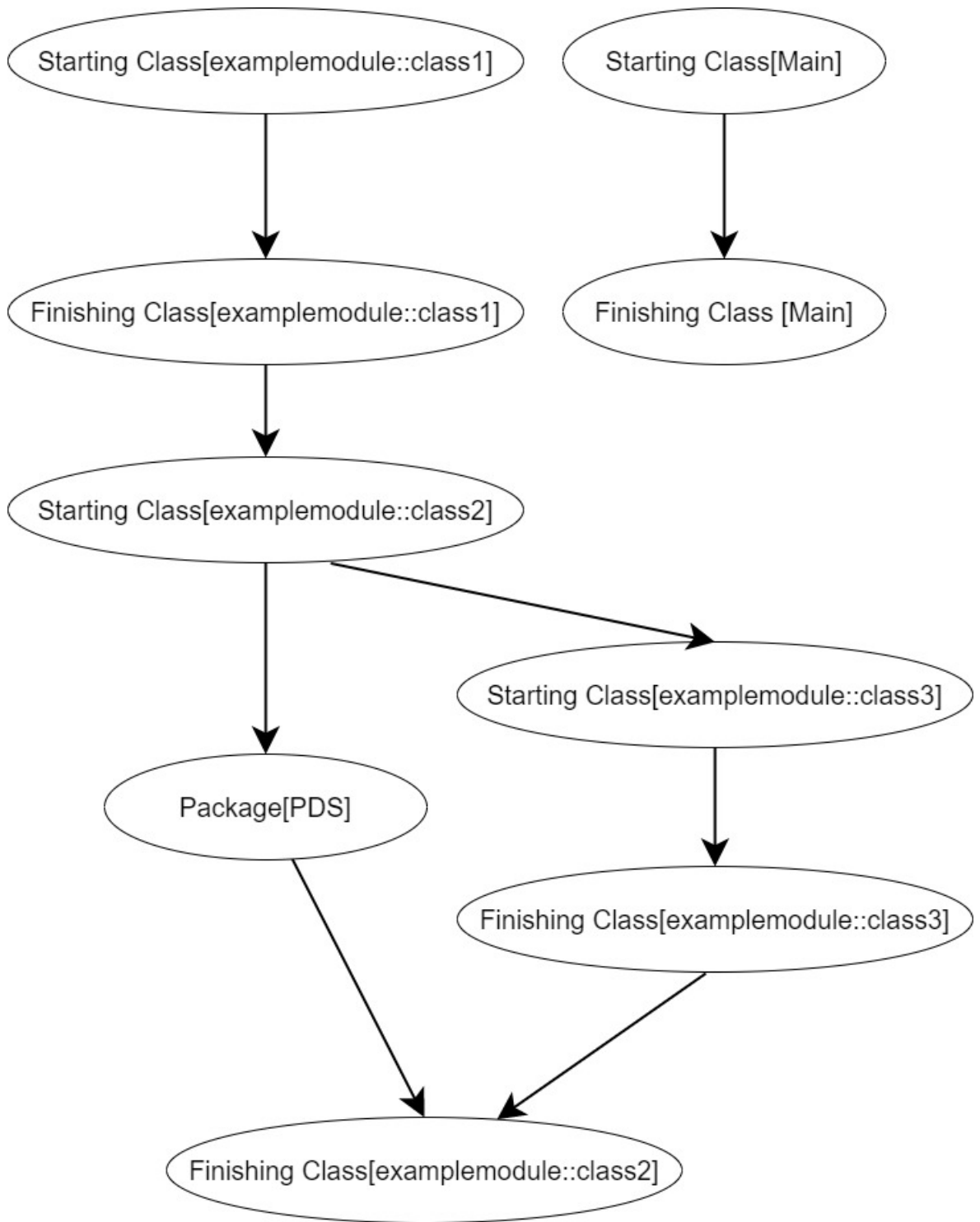
Chapter 5: Facts and Functions

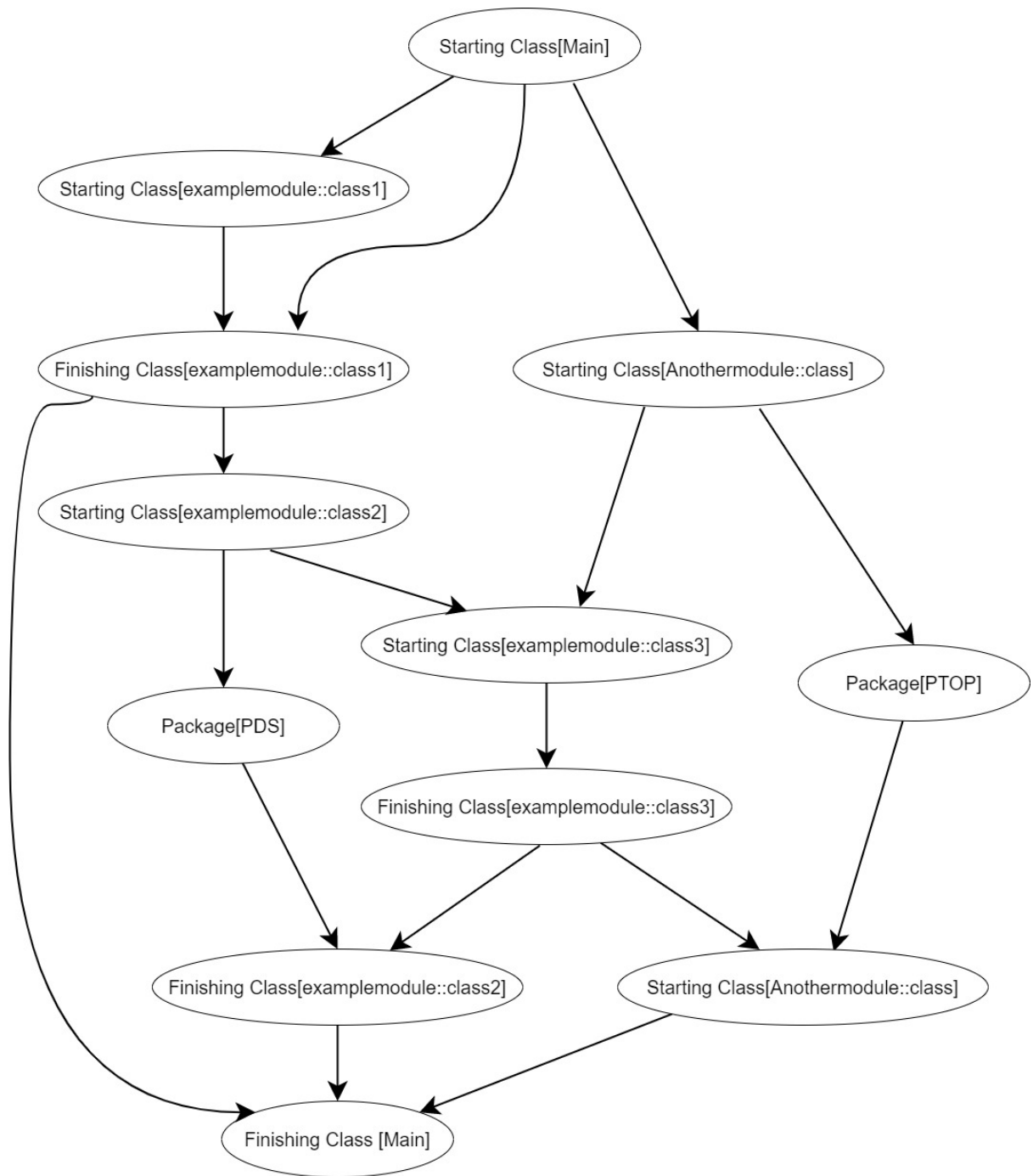
No images...

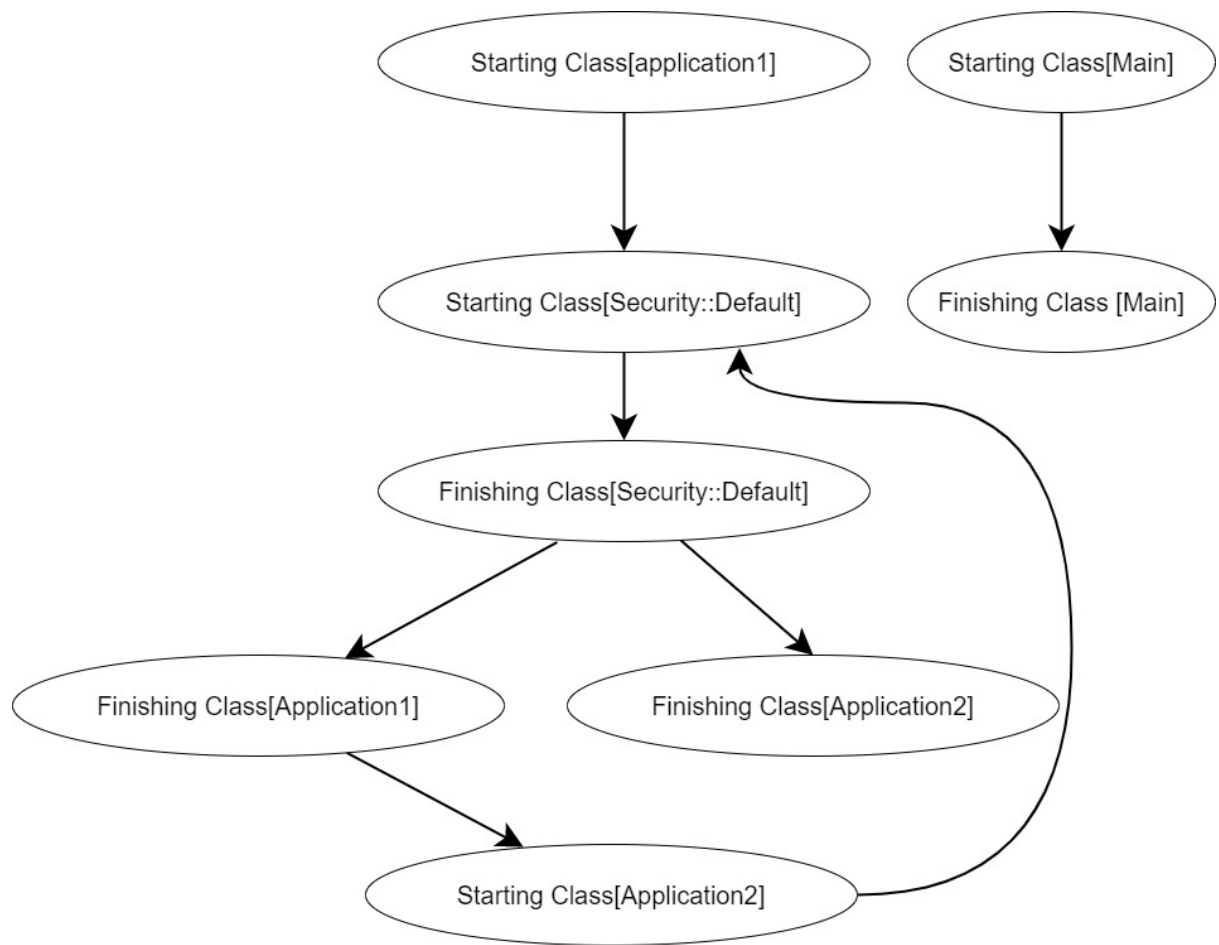
Chapter 6: Relationships, Ordering, and Scope







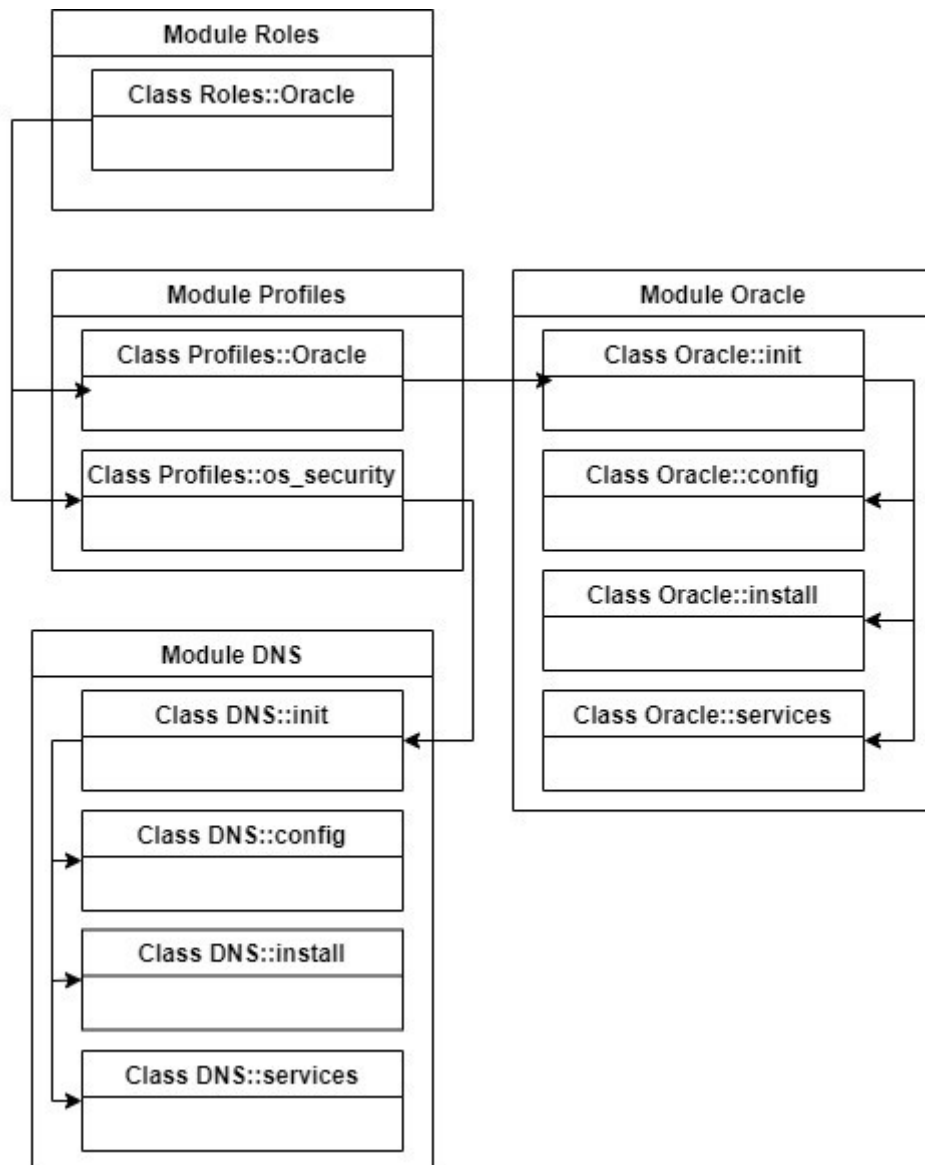




Chapter 7: Templating, Iterating, and Conditionals

No images...

Chapter 8: Developing and Managing Modules



```

> pdk new module
pdk (INFO): Creating new module:

We need to create the metadata.json file for this module, so we're going to ask you 5 questions.
If the question is not applicable to this module, accept the default option shown after each question. You can modify

[Q 1/5] If you have a name for your module, add it here.
This is the name that will be associated with your module, it should be relevant to the modules content.
--> packtexample

[Q 2/5] If you have a Puppet Forge username, add it here.
We can use this to upload your module to the Forge when it's complete.
--> davisandilands

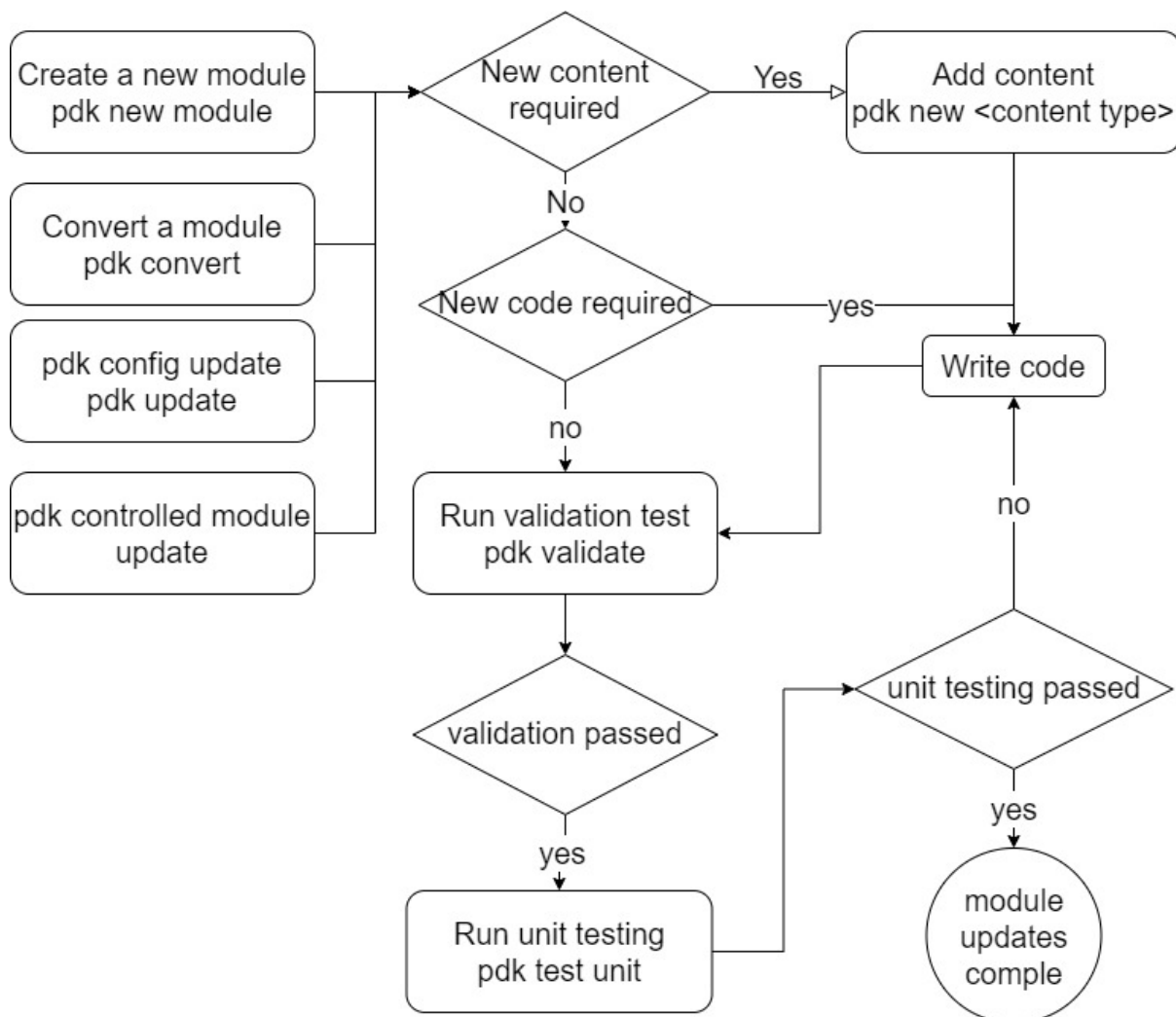
[Q 3/5] Who wrote this module?
This is used to credit the module's author.
--> davisandilands

[Q 4/5] What license does this module code fall under?
This should be an identifier from https://spdx.org/licenses/. Common values are "Apache-2.0", "MIT", or "proprietary"
--> Apache-2.0

[Q 5/5] What operating systems does this module support?
Use the up and down keys to move between the choices, space to select and enter to continue.
--> RedHat based Linux, Fedora, Windows

Metadata will be generated based on this information, continue? Yes
pdk (INFO): Using the default template-url and template-ref.
pdk (INFO): Module 'packtexample' generated at path 'C:/Users/David Sandilands/code/packtexample'.
pdk (INFO): In your module directory, add classes with the 'pdk new class' command.

```



Showing 1-25 of 6923 results :

Sort by: Most downloads ▾

Refine results

COMPATIBILITY

Any operating system

Any Puppet version ▾

QUALITY SCORE ⓘ

★ All scores ▾

ENDORSEMENTS

☐ SUPPORTED

☐ PARTNER

☐ APPROVED

FEATURES

☐ PREMIUM

☐ TASKS

☐ PDK

LATEST RELEASE

Anytime ▾

☐ Show deprecated modules

MODULE

by puppetlabs

puppetdb

PDK

Installs PostgreSQL and PuppetDB, sets up the connection to Puppet master.

Version 7.10.0 | Released Dec 16th 2021

313,095,209 downloads

5.0 quality score

MODULE

by saz

sudo

Manage sudo configuration via Puppet

Version 7.0.2 | Released Aug 25th 2021

122,771,017 downloads

5.0 quality score

MODULE

by puppetlabs

stdlib

PDK SUPPORTED

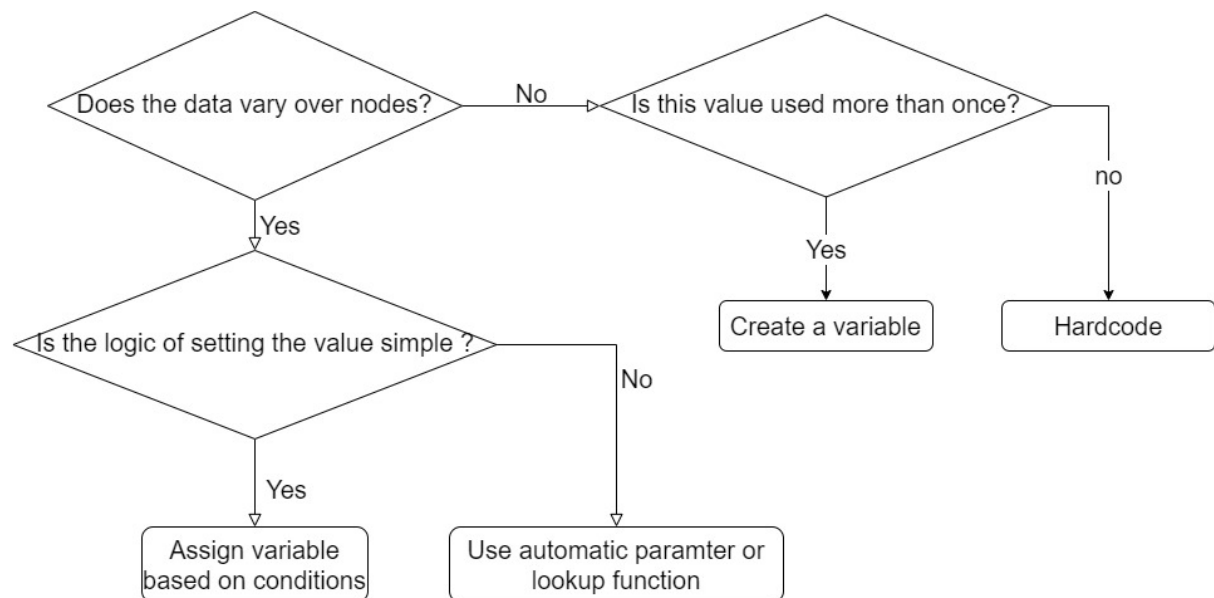
Standard library of resources for Puppet modules.


Version 8.5.0 | Released Oct 13th 2022

118,981,424 downloads

5.0 quality score

Chapter 9: Handling Data with Puppet



test@example.com ▾

Home > Environments > production > pe-server-0-d6a9f5.vhcpsckl41fedgadugqovud0sa.cwx.internal.cloudapp.net > message

Select environment
production ▾

Select node
pe-server-0-d6a9f5.vhcpsckl41fedgadugqovud0sa.cwx.internal.cloudapp.net ▾

Search

message



Lookup options: first

Yaml backend **yaml**

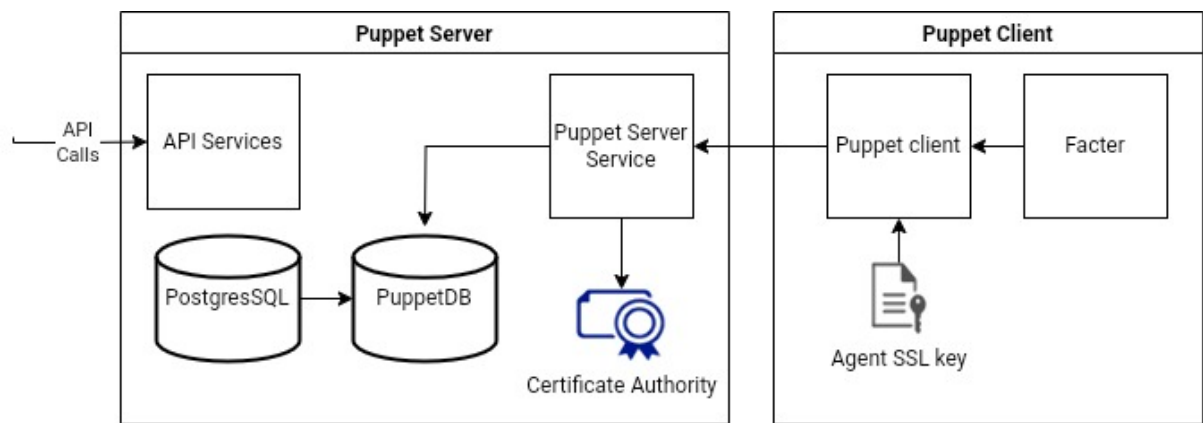
```
nodes/pe-server-0-d6a9f5.vhcpsckl41fedgadugqovud0sa.cwx.internal.cloudapp.net.yaml
```

common.yaml

👁

© 2023  betadots GmbH - Licensed under GNU Affero General Public License v3.0 -  Source code

Chapter 10: Puppet Platform Parts and Functions



Certificates

View the status of certificates and Certificate Revocation Lists (CRLs) and accept new certificates on agent nodes you have added to your inventory. Updated: 4 minutes ago

Certificates

Certificate revocation lists

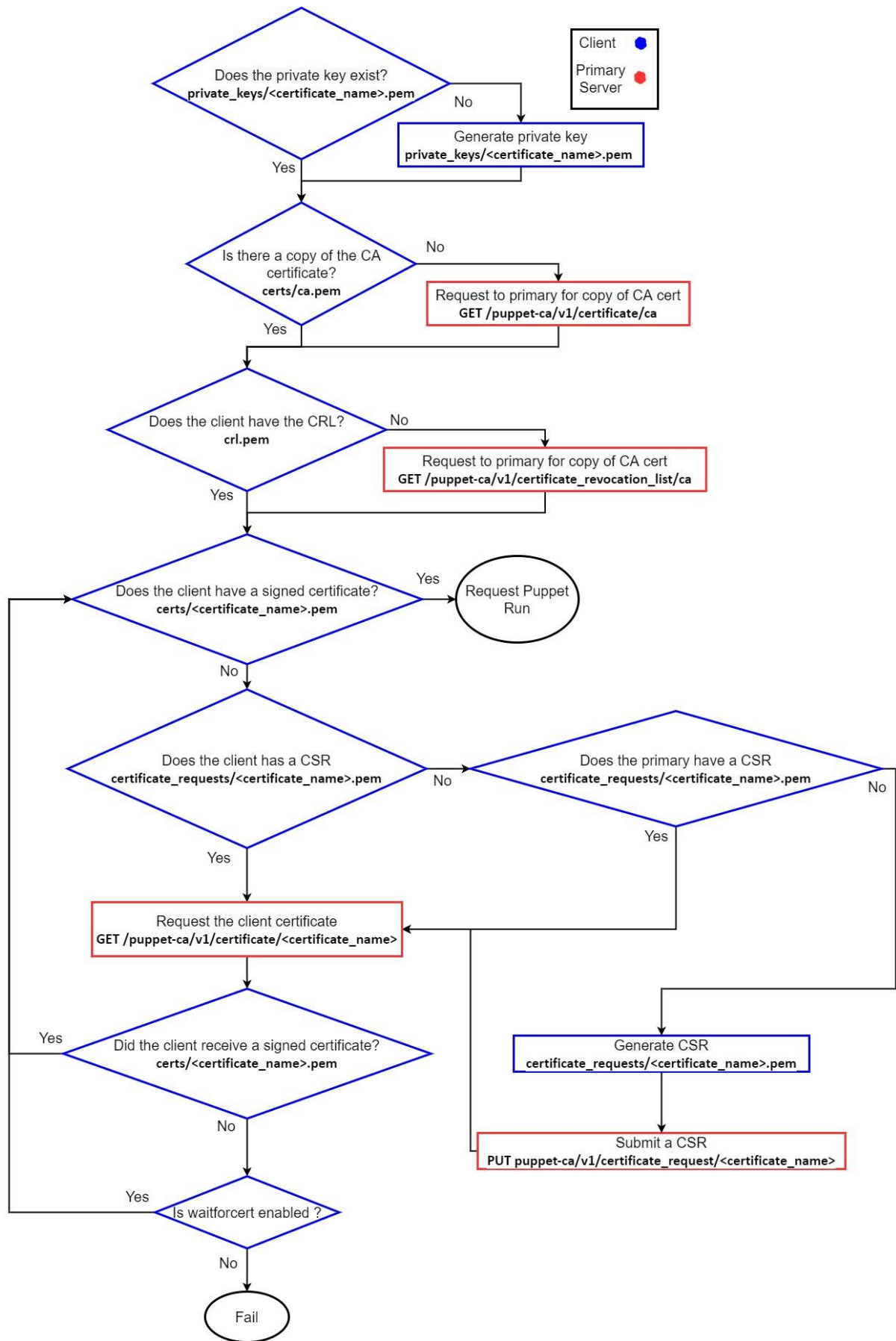
Unsigned certificates 1

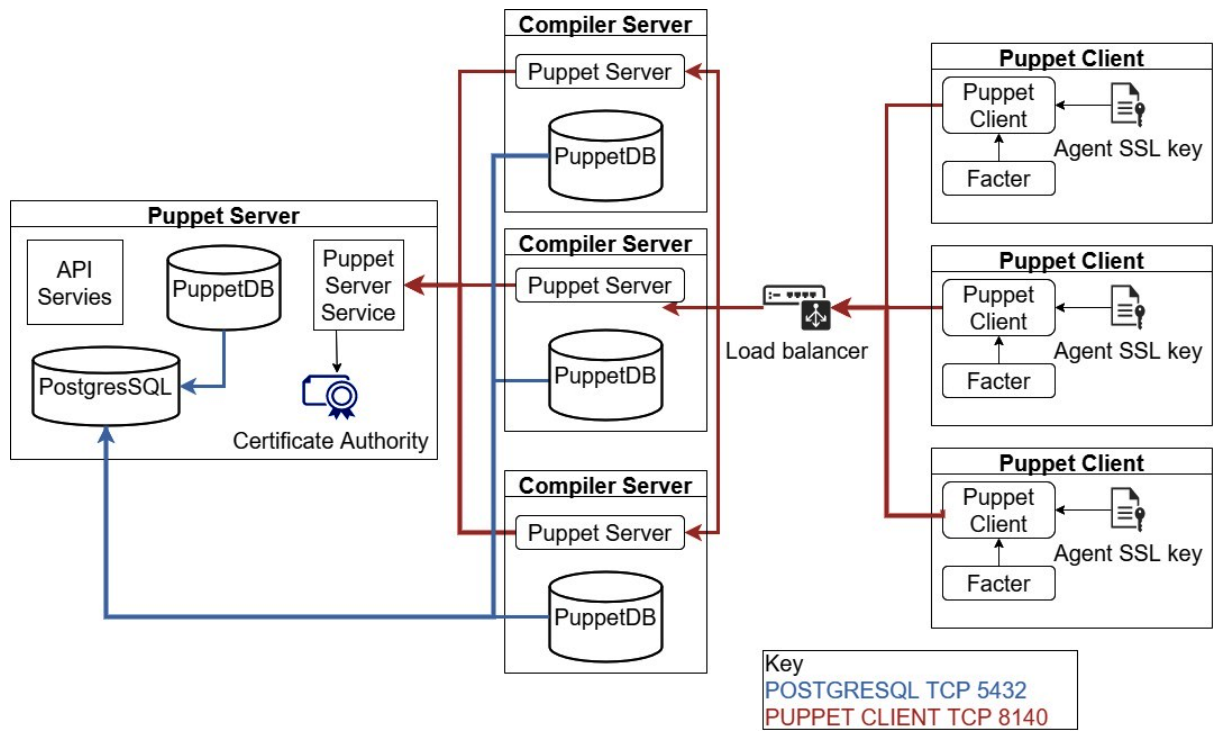
Accept certificates for agent nodes you have added to your inventory.

Accept All







Reject All

Node name	Fingerprint	
node.example.com	0D:CD:EE:94:BE:83:A7:0E:7A:C8:8E:3...	<div><div>Accept</div><div>Reject</div></div>

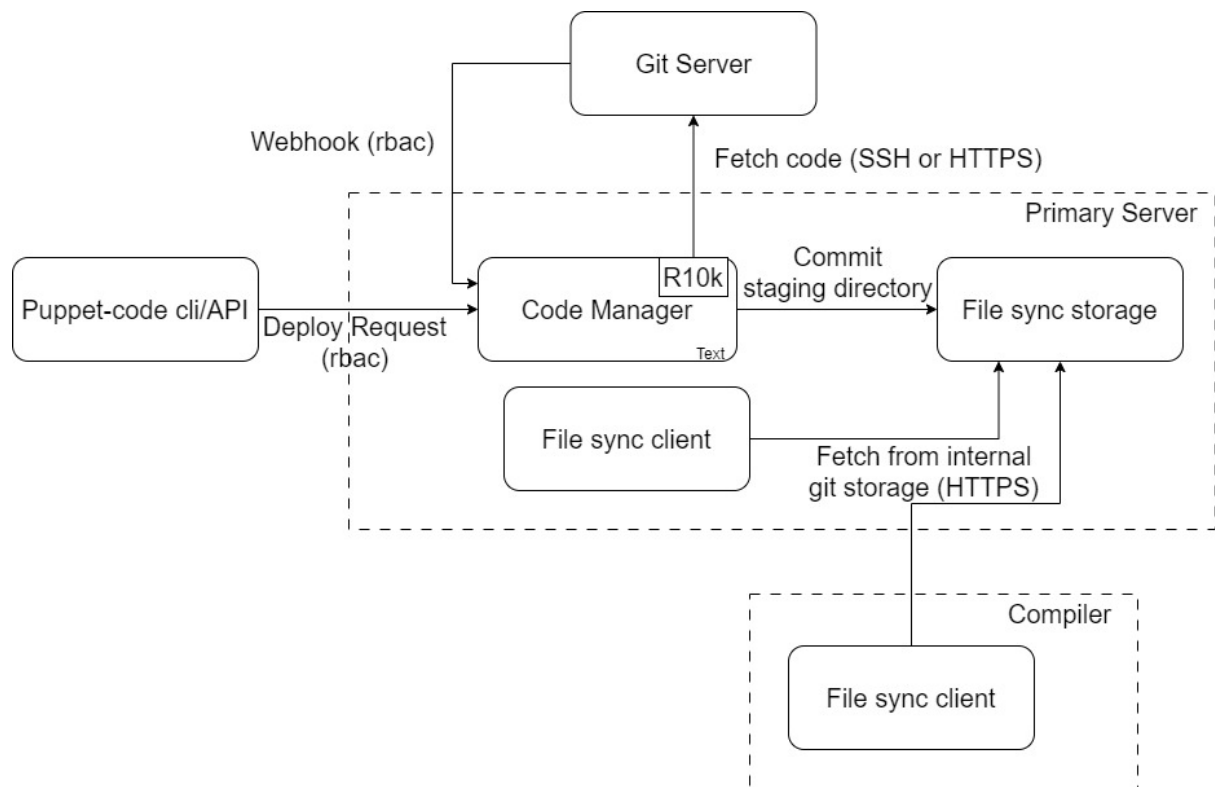




Chapter 11: Classification and Release Management

	All Nodes	production		
<hr/>				
	All Environments	production	Env group	Environment group parent and default
<hr/>				
	Development environment	development	Env group	Development nodes
<hr/>				
	Development one-time run exception	agent-specified	Env group	Allow
<hr/>				
	Production environment	production	Env group	Production nodes
<hr/>				
	PE Infrastructure	production		
<hr/>				
	PE Agent	production		
<hr/>				
	PE Certificate Authority	production		
<hr/>				
	PE Console	production		
<hr/>				
	PE Database	production		
<hr/>				
	PE Master	production		
<hr/>				
	PE Compiler	production		
<hr/>				
	PE Orchestrator	production		
<hr/>				
	PE PuppetDB	production		

- ▼ data
 - ▼ nodes
 - example-node.yaml
 - common.yaml
- ▼ manifests
 - site.pp
- ▼ scripts
 - config_version-r10k.rb
 - config_version-rugged.rb
 - config_version.sh
- ▼ site-modules
 - ▼ adhoc
 - ▼ plans
 - myplan.pp
 - ▼ tasks
 - nix_example.json
 - nix_example.sh
 - win_example.json
 - win_example.ps1
 - ▼ profile/manifests
 - base.pp
 - example.pp
 - ▼ role/manifests
 - database_server.pp
 - example.pp
 - webserver.pp
- .gitignore
- CODEOWNERS
- LICENSE
- Puppetfile
- README.md
- environment.conf
- hiera.yaml



Chapter 12: Bolt for Orchestration

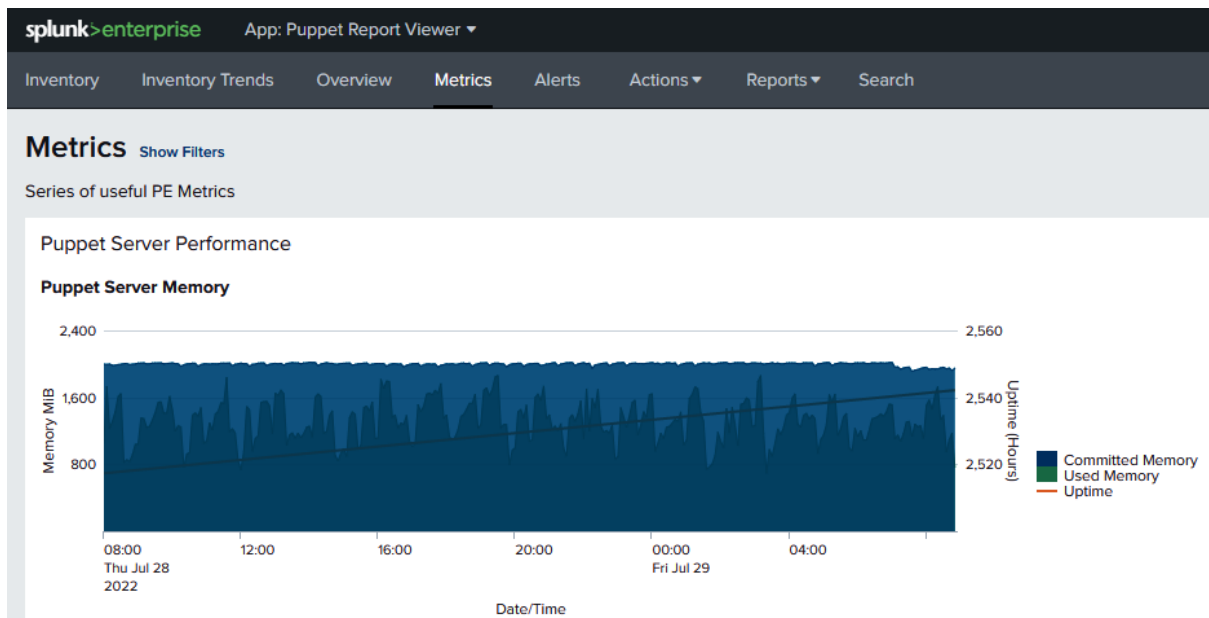
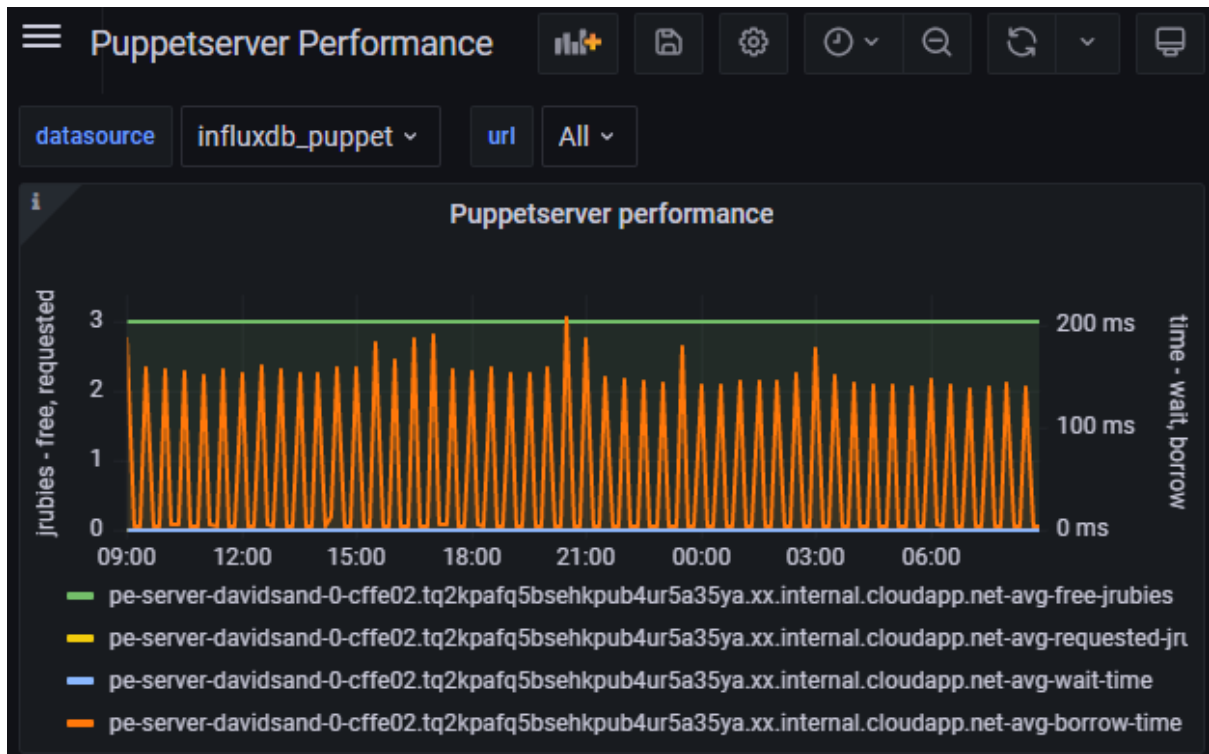
PowerShell Command	Linux Shell Command	Function
Invoke-BoltCommand	bolt command run	Run an ad hoc command
Invoke-BoltScript	bolt script run	Run a script
Invoke-BoltApply	bolt apply	Apply Puppet code
Send-BoltFile	bolt file upload	Upload a file
Receive-BoltFile	bolt file download	Download a file

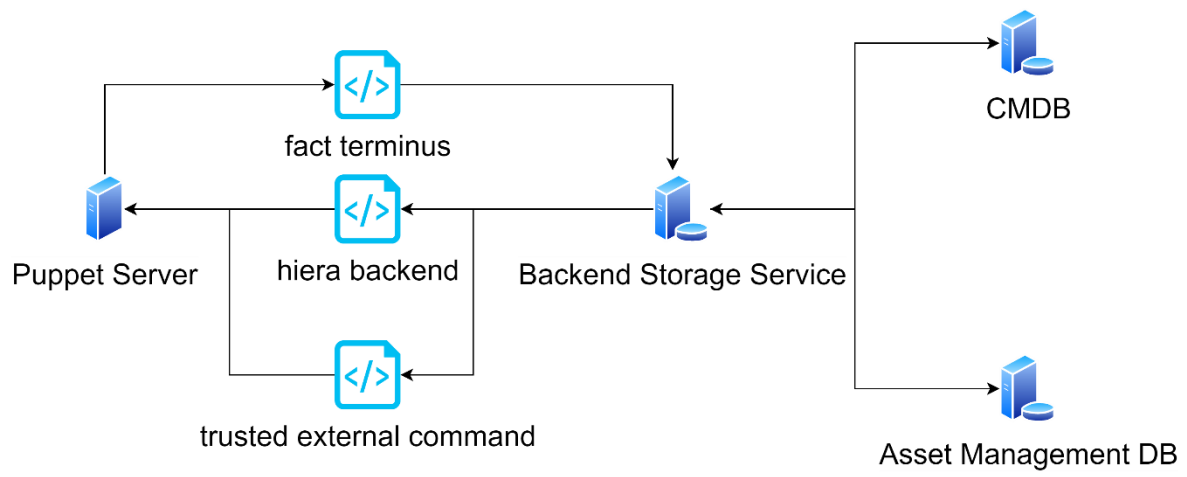
Chapter 13: Taking Puppet Server Further

✓ Puppet Services status

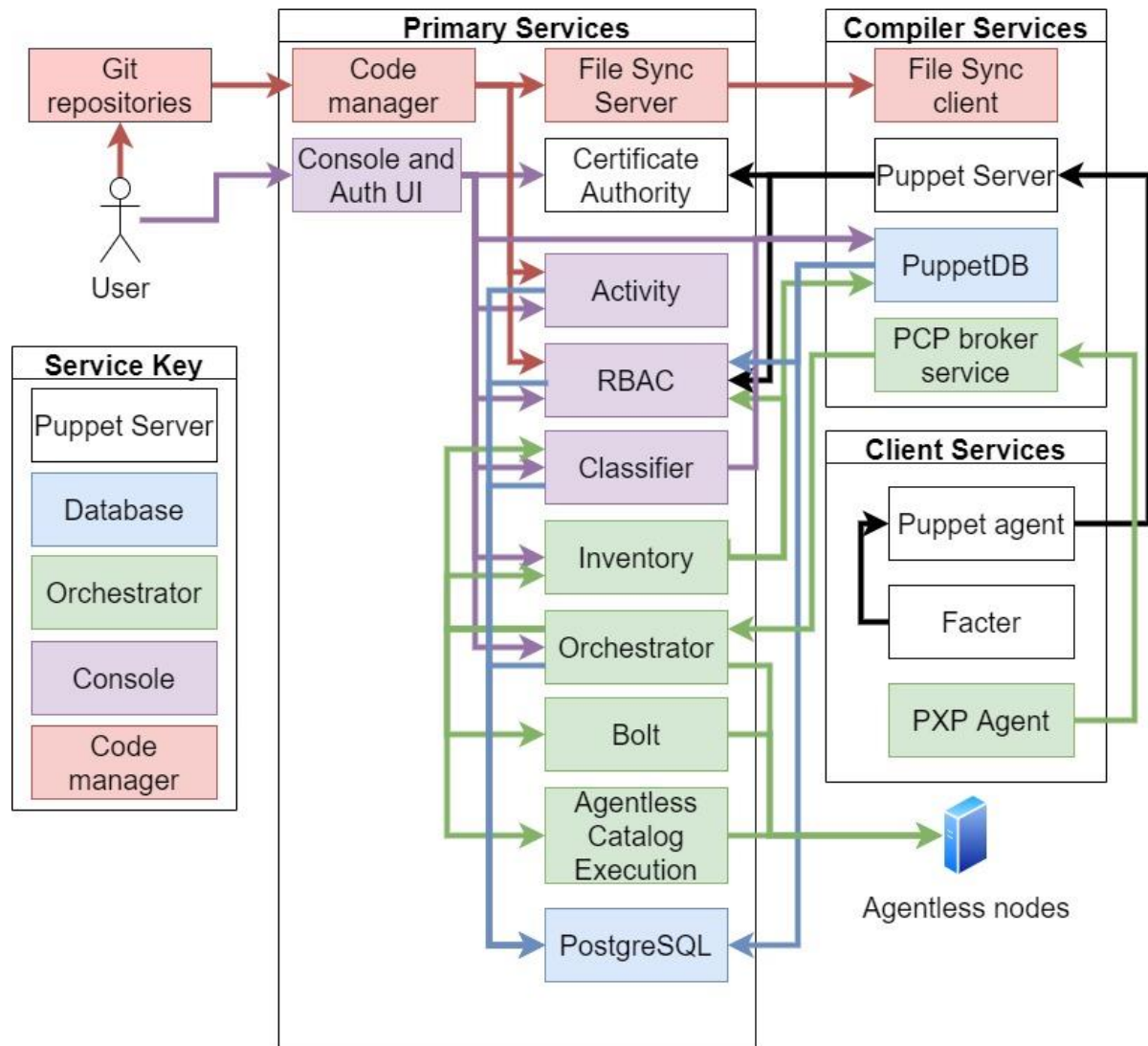
Puppet Services are all accepting requests.

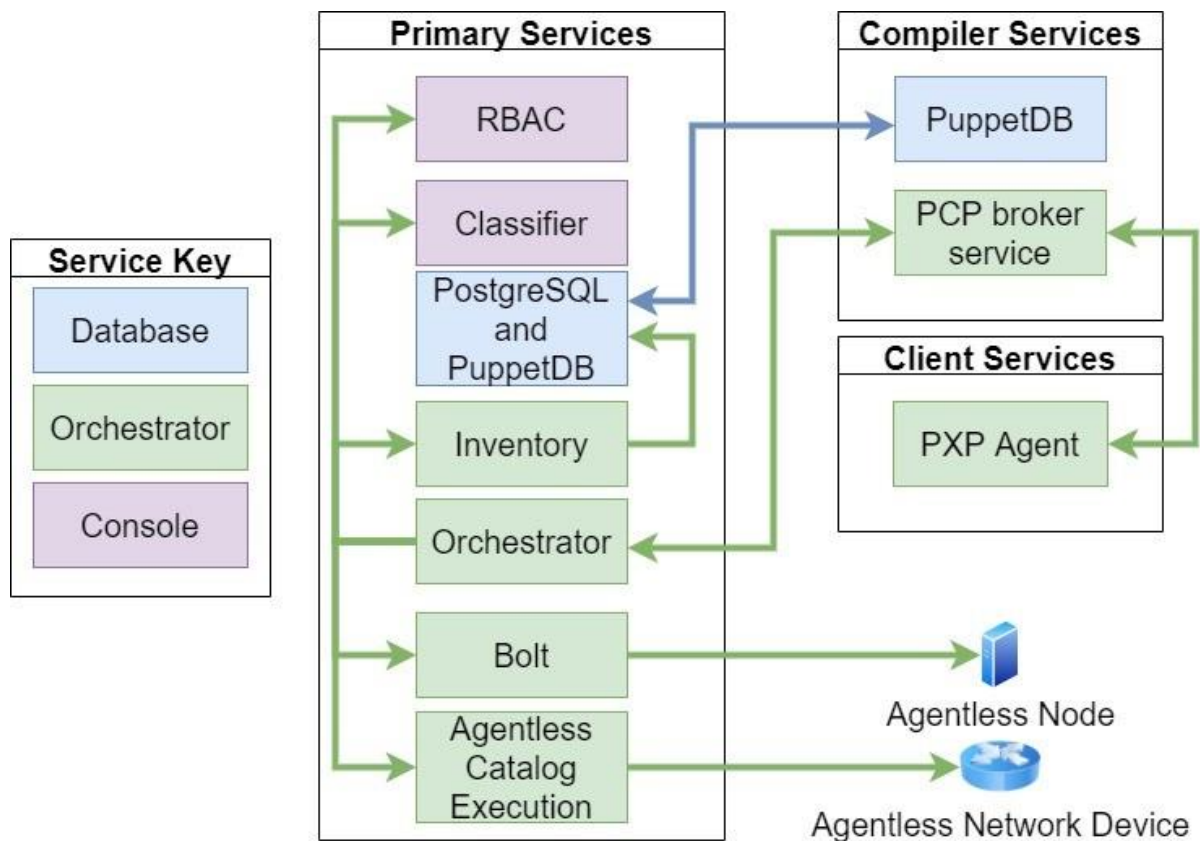
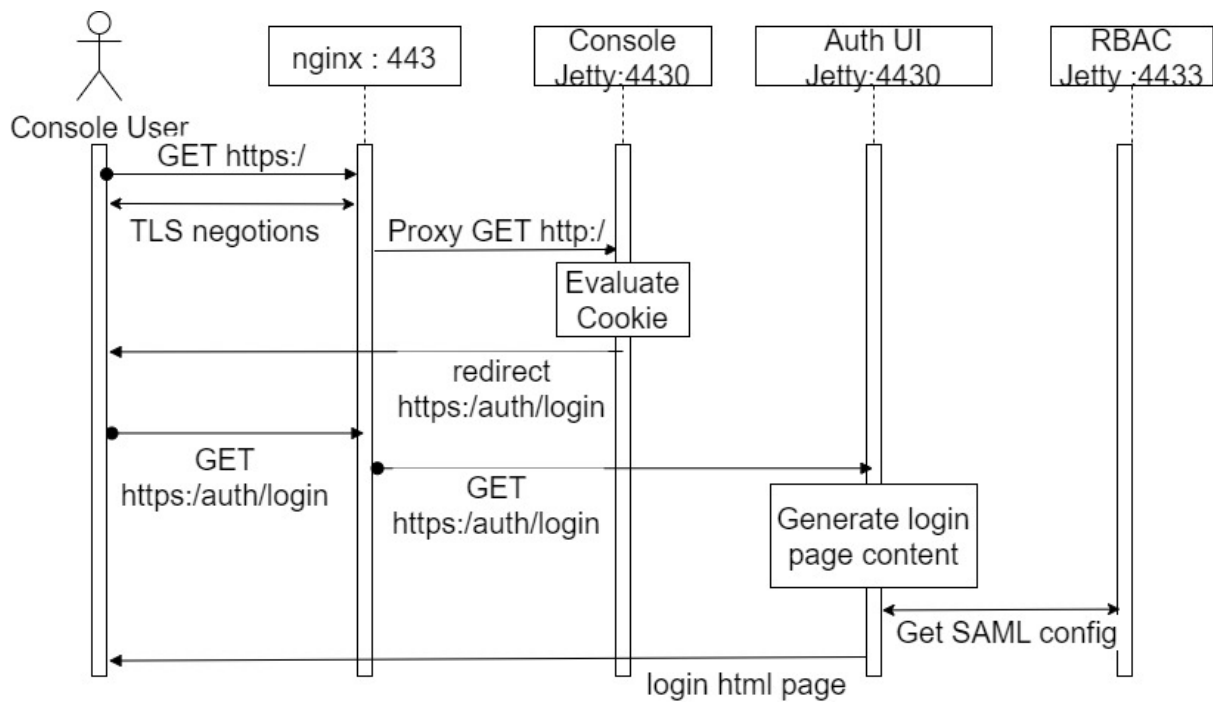
	Service	Message
✓	Activity Service https://pe-server-davidsand-0-cffe02.tq2kpaq5bsehkpub4ur5a35ya.xx.internal.cloudapp.net:4433	Operational
✓	Classifier Service https://pe-server-davidsand-0-cffe02.tq2kpaq5bsehkpub4ur5a35ya.xx.internal.cloudapp.net:4433	Operational
✓	Code Manager Service https://pe-server-davidsand-0-cffe02.tq2kpaq5bsehkpub4ur5a35ya.xx.internal.cloudapp.net:8140	Operational
✓	Orchestrator Service https://pe-server-davidsand-0-cffe02.tq2kpaq5bsehkpub4ur5a35ya.xx.internal.cloudapp.net:8143	Operational
✓	Puppet Server https://pe-server-davidsand-0-cffe02.tq2kpaq5bsehkpub4ur5a35ya.xx.internal.cloudapp.net:8140	Operational
✓	PuppetDB Service https://pe-server-davidsand-0-cffe02.tq2kpaq5bsehkpub4ur5a35ya.xx.internal.cloudapp.net:8081	Operational
✓	RBAC Service https://pe-server-davidsand-0-cffe02.tq2kpaq5bsehkpub4ur5a35ya.xx.internal.cloudapp.net:4433	Operational





Chapter 14: A Brief Overview of Puppet Enterprise





Permissions

Add a permission

Tasks

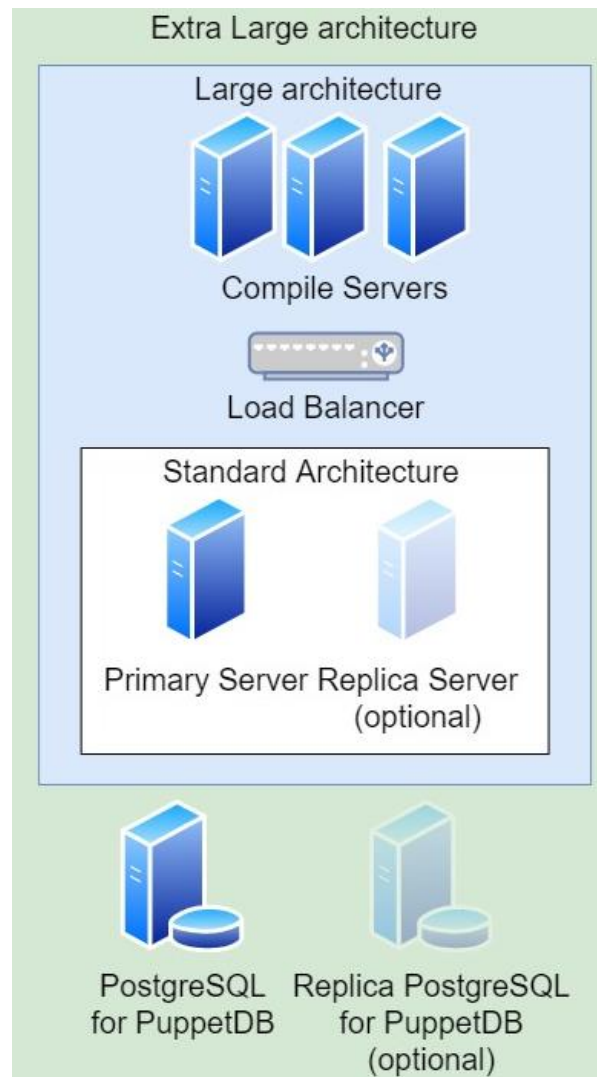
Run Tasks

adhoc::win_example

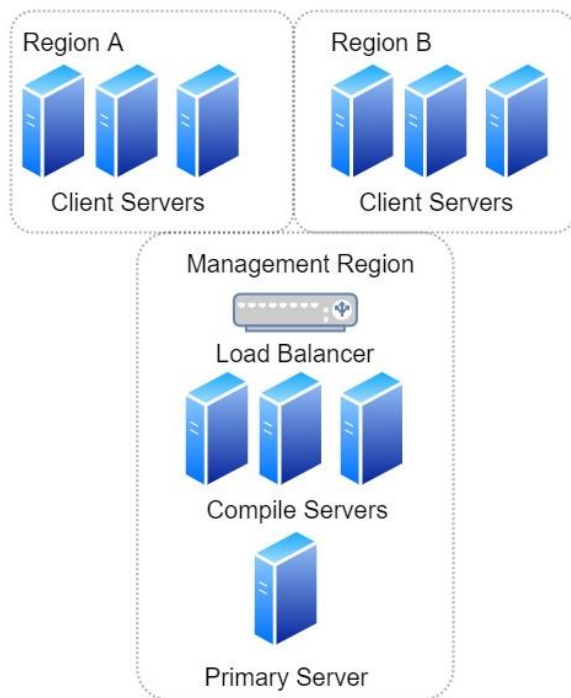
Permitted nodes

PQL Query

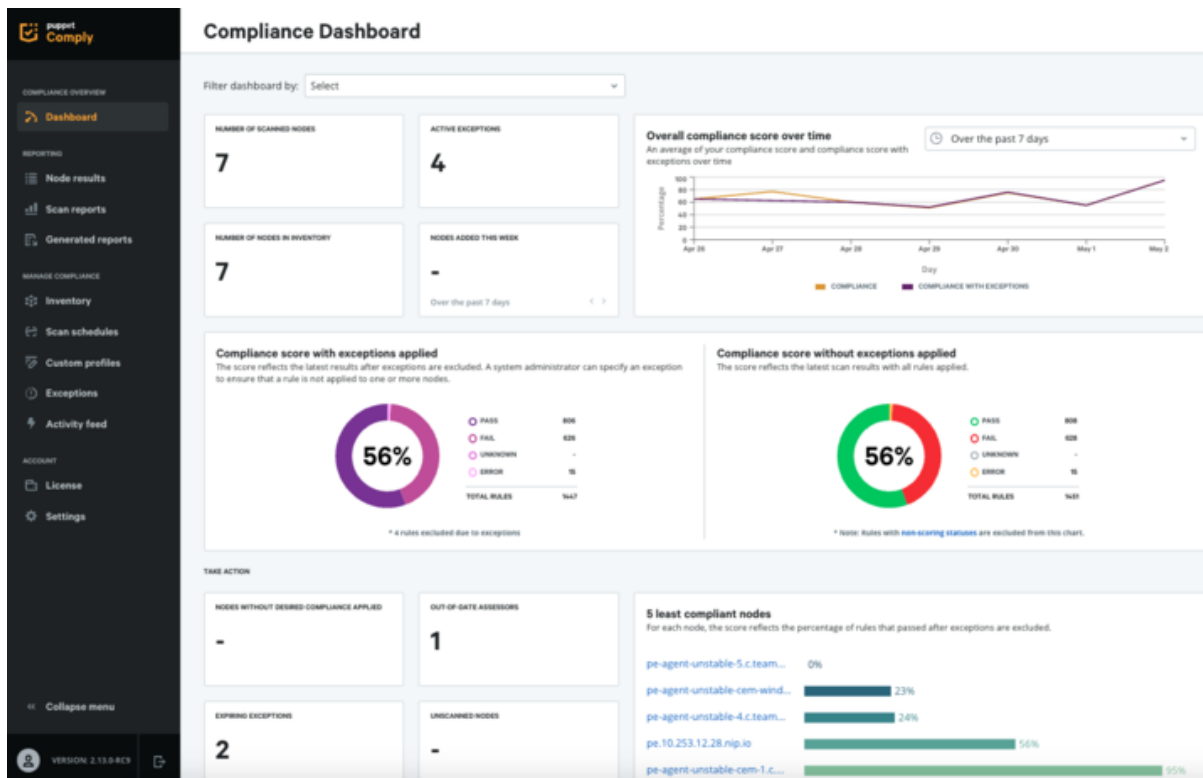
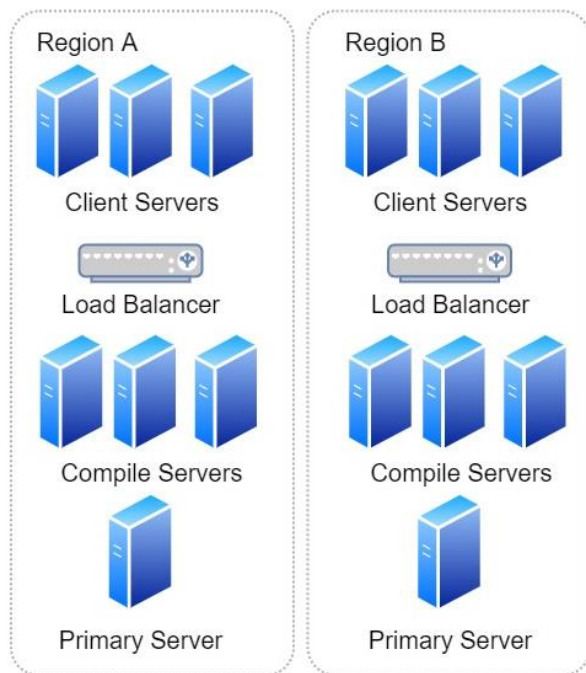
```
inventory[certname] { facts.os.name = "windows" }
```



Centralized Deployment



Federated Deployment



Chapter 15: Approaches to Adoption

